



Response Grids

Copyright Statement for this Assessment and Evaluation Services Publication

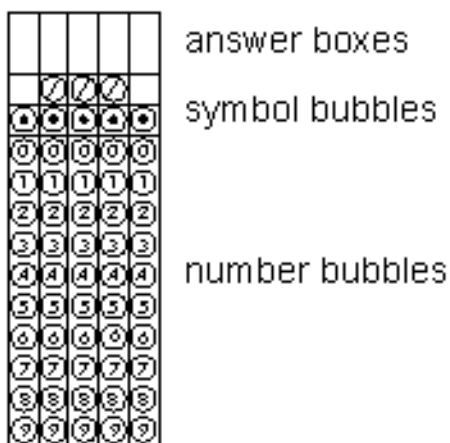
Authorization for reproduction of this document is hereby granted to persons acting in an official capacity within the State System of Public Education as defined in Section 228.041(1), Florida Statutes. The copyright notice at the bottom of this page must be included in all copies.

The Administrator
Assessment and Evaluation Services
Florida Department of Education
Turlington Building, Room 414
325 West Gaines Street
Tallahassee, Florida 32399-0400

Copyright © 2000
State of Florida
Department of State

How to Complete the Response Grids

Parts of a Response Grid



Rules for Filling in Response Grids

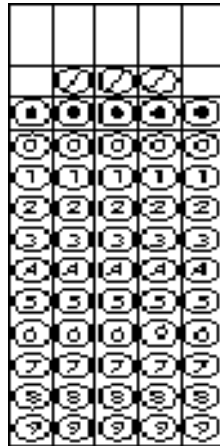
Work the problem and find an answer. Then transfer your answer to the answer sheet, following the steps described below:

- Print your answer in the answer boxes.
- Print only one digit or symbol in each answer box.
- Do not write any digits or symbols outside the answer boxes.
- You may print your answer with the first digit in the left answer box, or with the last digit in the right answer box. You may leave blank any boxes you do not need on the right or the left side of your answer.
- Do not leave a blank answer box in the middle of an answer.
- Be sure to write the decimal point or fraction bar in the answer box if it is part of the answer.
- A blank answer is not the same as a zero. If there is a zero in the answer, write the zero in the answer box and bubble in below.
- Fill in only one bubble for every answer box that you have written in.
- Do not fill in a bubble under a blank answer box.
- Use improper fractions or decimal values, rather than mixed numbers. For example, $2 \frac{1}{5}$ must be entered either as $11/5$ or 2.2

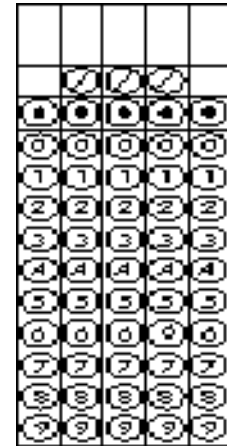
GRID PRACTICE 1.

Grid the following

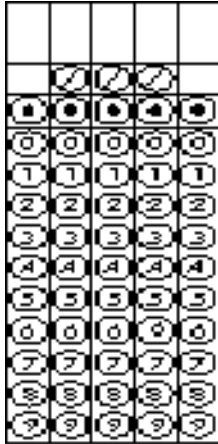
1. 8090
2. $\frac{7}{8}$
3. 0.95
4. 18,356
5. 320,597
6. 83.49
7. $2\frac{5}{8}$
8. $\frac{75}{100}$



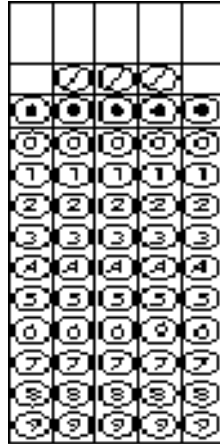
2.



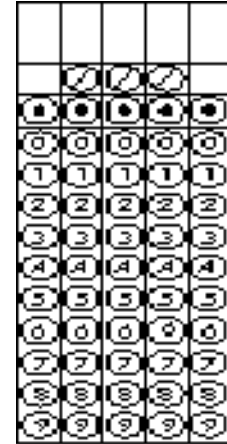
3.



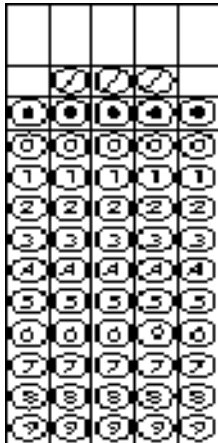
4.



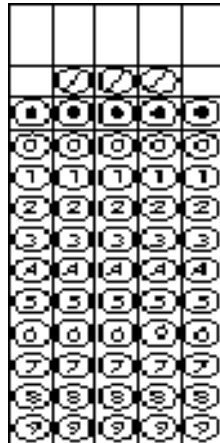
5.



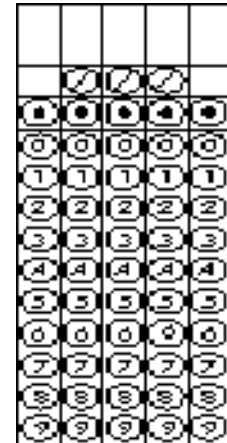
6.



7.



8.



Common Mistakes with Gridding

Find the mistakes

1. (A) (B) (C) (●)
2. (A) (B) (C) (●)
3. (A) (B) (●) (D)
4. (A) (●) (C) (D)

5. 2.5

6. 140

7. $11 \quad 48$

8. 428

9. 10

10. (A) (●) (C) (D)
11. (A) (●) (C) (D)
12. (A) (B) (●) (D)
13. (A) (B) (C) (●)

14. 6

15. 75

16. $5 / / 5$

17.

18. 10