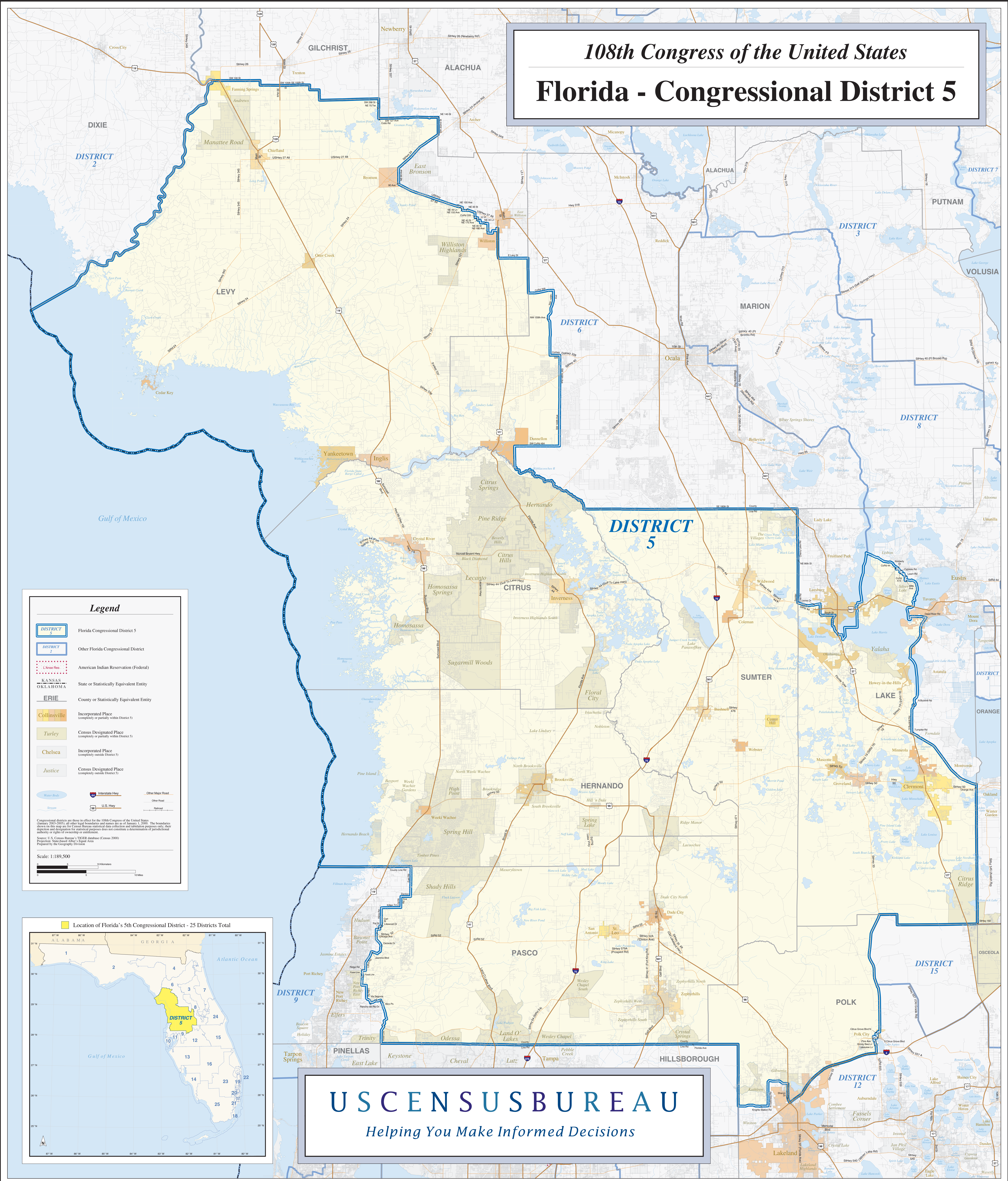


108th Congress of the United States Florida - Congressional District 5



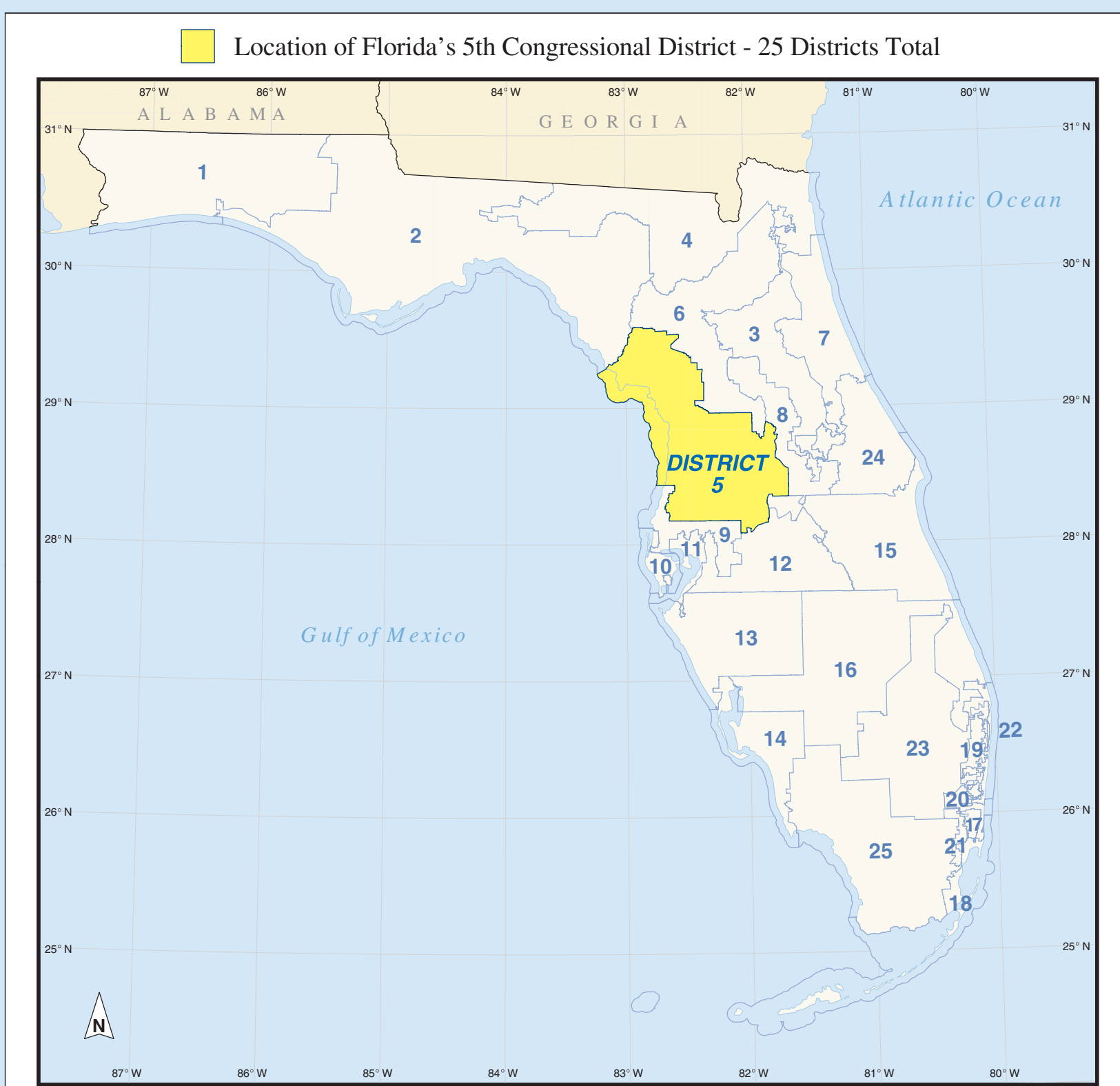
Legend

- DISTRICT 5** Florida Congressional District 5
- DISTRICT 2** Other Florida Congressional District
- Indian Reservation** American Indian Reservation (Federal)
- KANSAS OKLAHOMA** State or Statistically Equivalent Entity
- ERIE** County or Statistically Equivalent Entity
- Collinsville** Incorporated Place (completely or partially within District 5)
- Turley** Census Designated Place (completely or partially within District 5)
- Chelsea** Incorporated Place (completely outside District 5)
- Justice** Census Designated Place (completely outside District 5)
- Water Body** Interstate Hwy, Other Major Road
- Stream** Other Road, Highway
- U.S. Hwy** Interstate Hwy, Other Major Road

Congressional districts are those in effect for the 108th Congress of the United States (January 2003-2005); all other legal boundaries and names are as of January 1, 2000. The boundaries shown on this map are for Census Bureau apportionment data collection and redistricting purposes only; they do not represent or determine jurisdictional authority or rights of ownership or entitlement.

Source: U.S. Census Bureau's TIGER database (Census 2000) Projector, State Street Maps, Equal Area. Prepared by the Geography Division.

Scale: 1:189,500



USCENSUSBUREAU
Helping You Make Informed Decisions