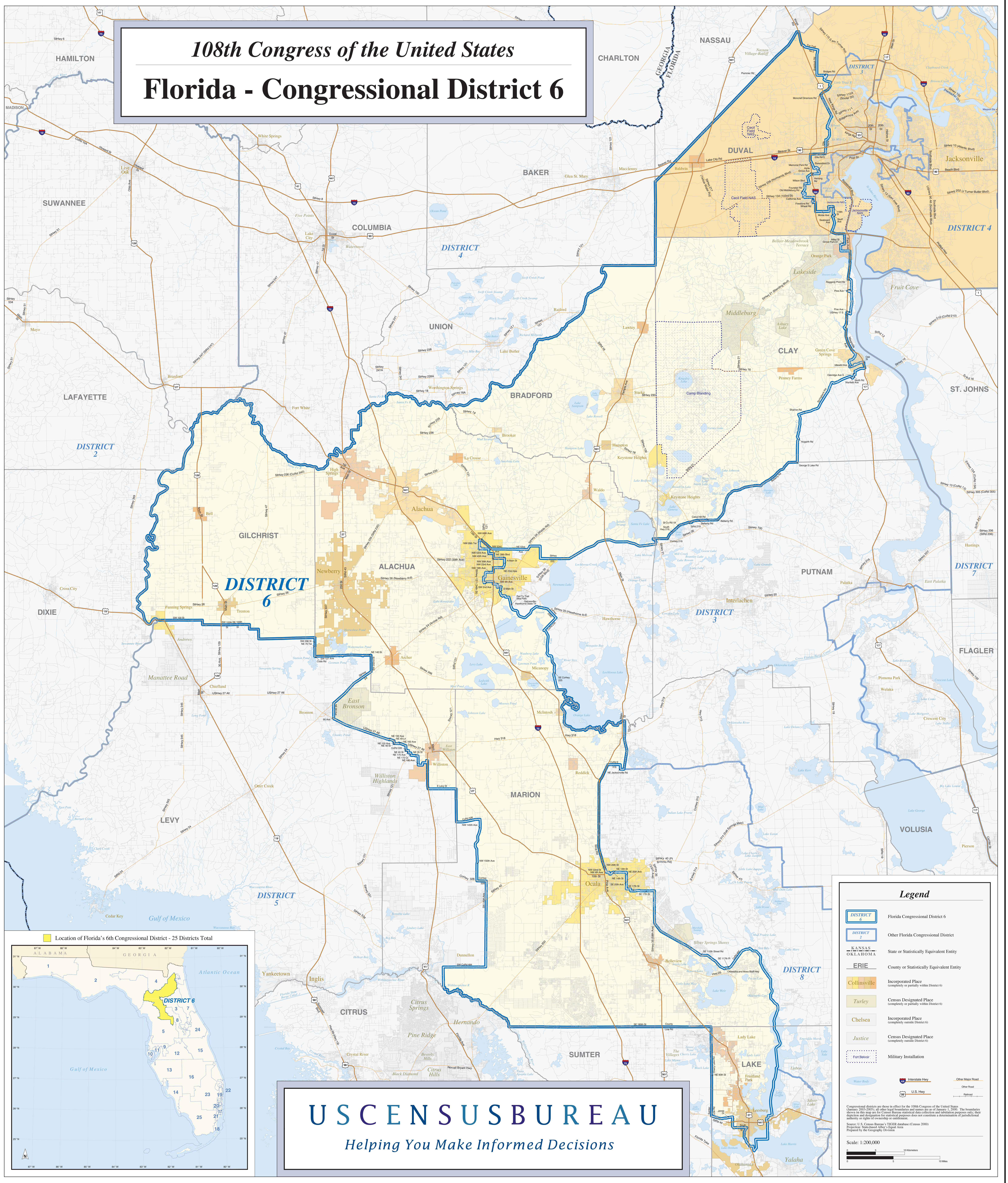


108th Congress of the United States

Florida - Congressional District 6



DISTRICT 6

US CENSUS BUREAU
Helping You Make Informed Decisions

Legend

- DISTRICT 6 Florida Congressional District 6
- DISTRICT 2 Other Florida Congressional District
- KANSAS
OKLAHOMA State or Statistically Equivalent Entity
- ERIE County or Statistically Equivalent Entity
- Collinsville Incorporated Place (completely or partially within District 6)
- Turley Census Designated Place (completely or partially within District 6)
- Chelsea Incorporated Place (completely outside District 6)
- Justice Census Designated Place (completely outside District 6)
- Fort Belvoir Military Installation
- ~ Water Body
- ~ Stream
- Interstate Hwy
- U.S. Hwy
- Other Major Road
- Other Road
- Railroad

Congressional districts are those in effect for the 108th Congress of the United States (January 2003-2005); all other legal boundaries and names are as of January 1, 2000. The boundaries shown on this map are for Census Bureau statistical data collection and tabulating purposes only; their accuracy and suitability for statistical purposes does not constitute a determination of jurisdictional authority or rights of ownership or entitlement.

Source: U.S. Census Bureau's TIGER database (Census 2000) Projected Subcounty Level Legal Areas Prepared by the Geography Division

Scale: 1:200,000

