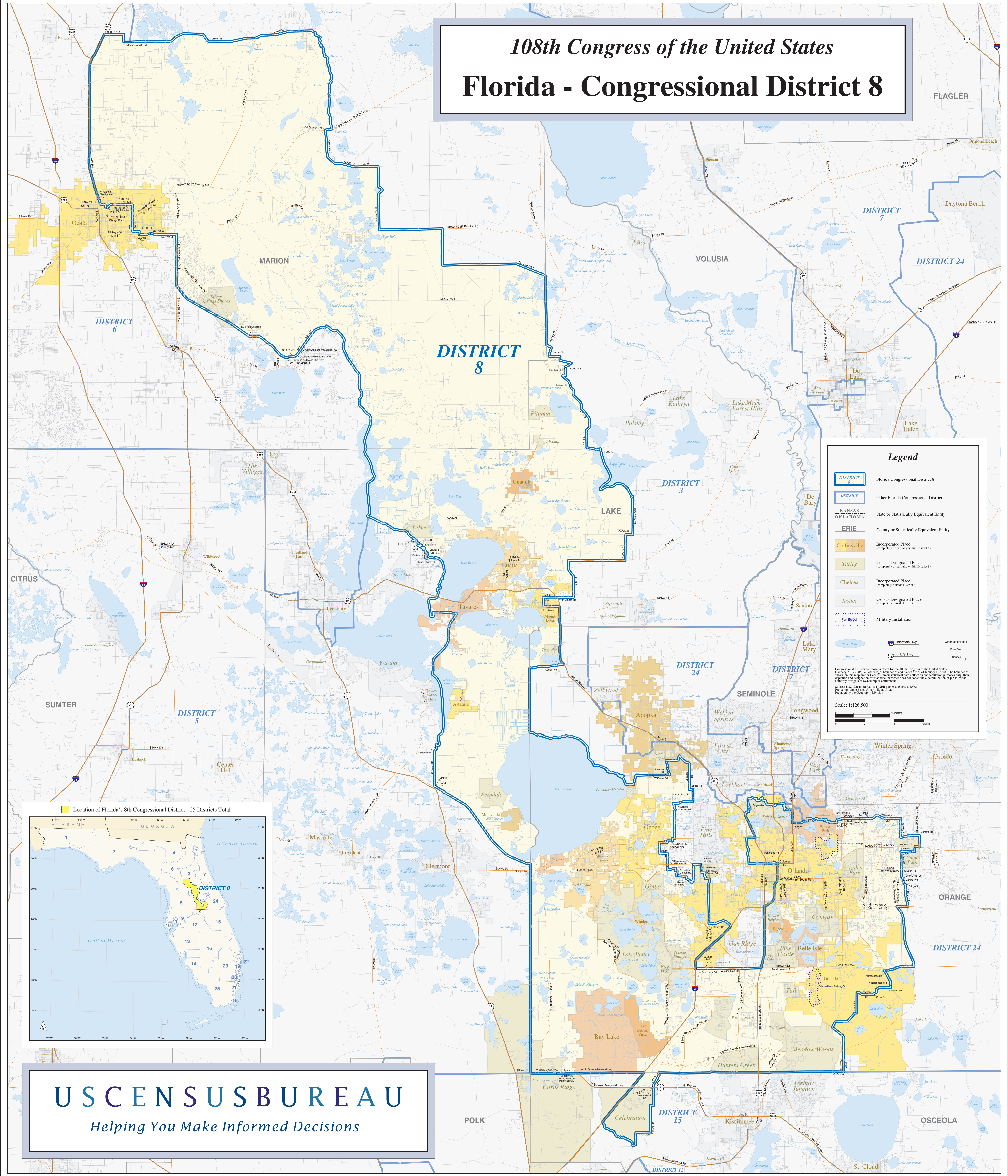


108th Congress of the United States

Florida - Congressional District 8



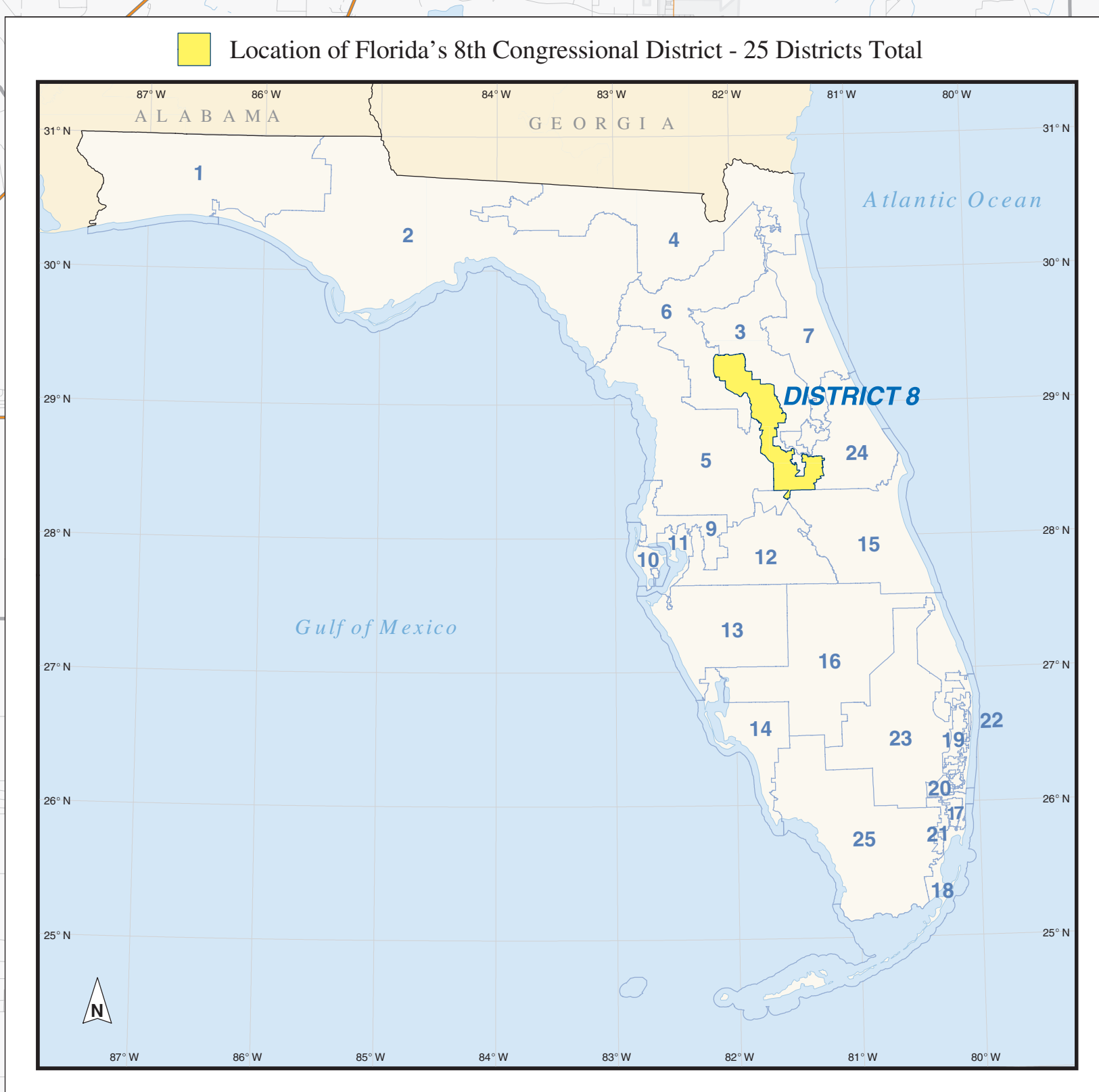
Legend

- DISTRICT 8 Florida Congressional District 8
- DISTRICT 2 Other Florida Congressional District
- KANSAS OKLAHOMA State or Statistically Equivalent Entity
- ERIE County or Statistically Equivalent Entity
- Collinsville Incorporated Place (completely or partially within District 8)
- Turley Census Designated Place (completely or partially within District 8)
- Chelsea Incorporated Place (completely outside District 8)
- Justice Census Designated Place (completely outside District 8)
- Fort Belvoir Military Installation
- Water Body Water Body
- Stream Stream
- Interstate Hwy Interstate Highway
- U.S. Hwy U.S. Highway
- Other Major Road Other Major Road
- Other Road Other Road
- Railroad Railroad

Congressional districts are those in effect for the 108th Congress of the United States (January 2003-2009); all other legal boundaries and names are as of January 1, 2000. The boundaries shown on this map are for Census Bureau statistical data collection and tabulation purposes only; their depiction and designation for statistical purposes does not constitute a determination of jurisdictional authority or rights of ownership or control.

Source: U.S. Census Bureau's TIGER database (Census 2000) Projection: Statewide Albers Equal Area
Prepared by the Geography Division

Scale: 1:126,500



USCENSUSBUREAU
Helping You Make Informed Decisions