


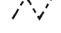






Peace River Watershed  
Drainage Sub-Basins

-  Municipalities
-  Watershed Boundary
-  Sub Basin Boundary
-  County Boundary
-  US/State Roads
-  Hydrography
-  Intermittent Hydrography
-  District Boundary

Sub Basin Names

- 1 SADDLE CREEK/LAKE HANCOCK
- 2 HORSE CREEK
- 3 HOG BRANCH
- 4 MAX BRANCH
- 5 THOMPSON BRANCH
- 6 UNNAMED BRANCH
- 7 HICKORY BRANCH
- 8 SAND GULLY
- 9 BEAR BRANCH
- 10 JOSHUA CREEK
- 11 HAMPTON BRANCH
- 12 WALKER BRANCH
- 13 SHELL CREEK/PRAIRIE CREEK
- 14 MARE BRANCH
- 15 OAK HILL BRANCH
- 16 MCBRIDE SLOUGH
- 17 THORNTON BRANCH
- 18 UNNAMED DITCHES
- 19 UNNAMED DRAIN
- 20 LEE BRANCH
- 21 LITTLE ALLIGATOR CREEK
- 22 NORTH COASTAL
- 23 BROAD CREEK
- 24 PUNTA GORDA ISLES CANAL
- 25 PEACE CREEK DRAINAGE CANAL
- 26 BEAR BRANCH
- 27 PEACE RIVER
- 28 MINED AREA
- 29 WHIDDEN CREEK
- 30 BOWLESS CREEK
- 31 SINK BRANCH
- 32 PAYNE CREEK
- 33 CHARLIE CREEK
- 34 LITTLE CHARLIE CREEK
- 35 TROUBLESOME CREEK
- 36 HICKORY CREEK
- 37 OAK CREEK
- 38 ALLIGATOR BRANCH
- 39 LIMESTONE CREEK
- 40 DIRECT RUNOFF TO BAY
- 41 N. FORK ALLIGATOR CREEK
- 42 TIDAL CALOOSA HATCHEE
- 43 BAY MOUND CREEK
- 44 WINEGOURD CREEK
- 45 WHIDDEN BRANCH
- 46 MANGROVE PONT CANAL
- 47 BEAR BRANCH

Watershed and drainage basin boundary information was obtained from the United States Geological Survey's (USGS) Water Resources Division. For purposes of this study, some of the smaller basins were combined with larger basins for ease of use. Municipal boundaries were digitized from the Florida Department of Transportation county road maps. Hydrography was obtained from the USGS 1:100,000-scale Digital Line Graph (DLG) files. Roads were obtained from USGS 1:250,000-scale DLG files.

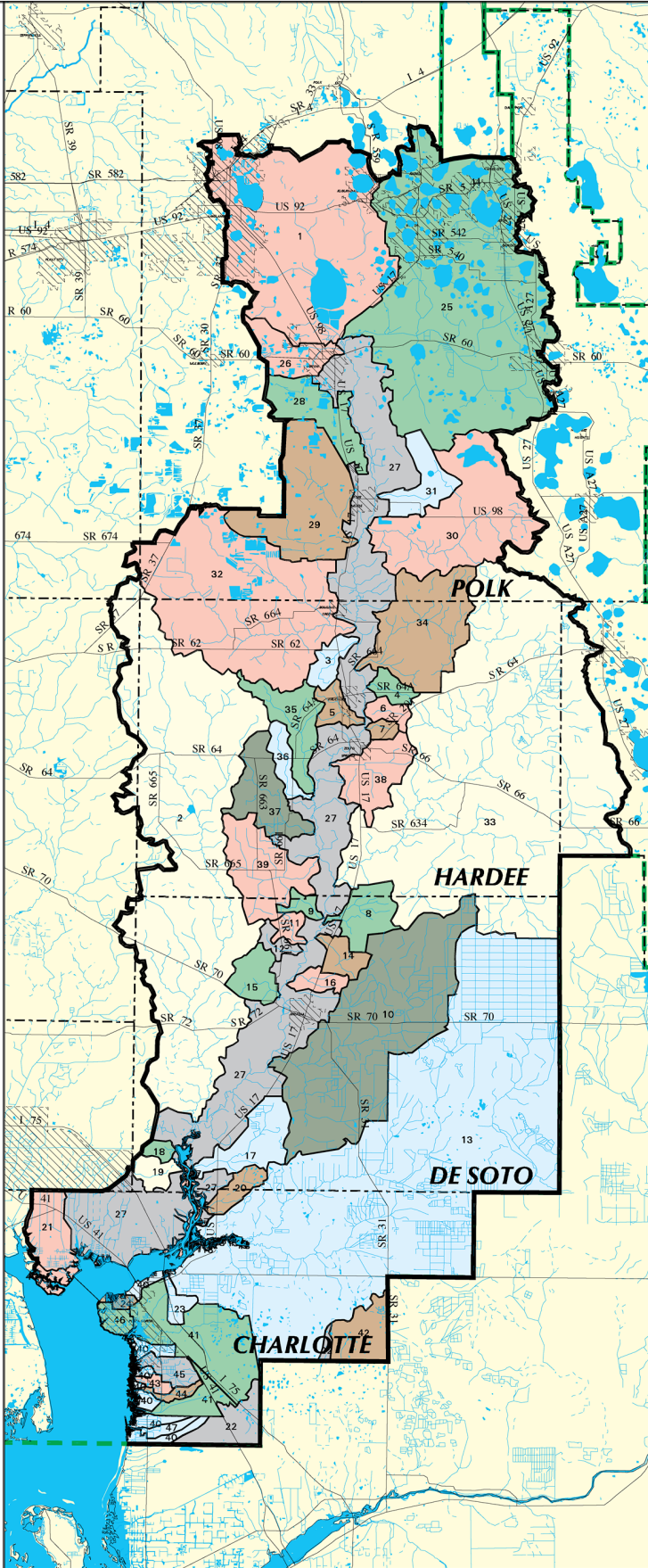


MAP 2



2 0 2 4 6 8 10 Miles

Map Creation Date: May 02, 2001



Peace River Watershed Drainage Sub-Basins, May 2, 2001

Southwest Florida Water Management District, *Peace River Comprehensive Watershed Management Plan Atlas* (Brooksville, FL: Southwest Florida Water Management District, 2001)

Downloaded from *Maps ETC*, on the web at <http://etc.usf.edu/maps> [map #11814]