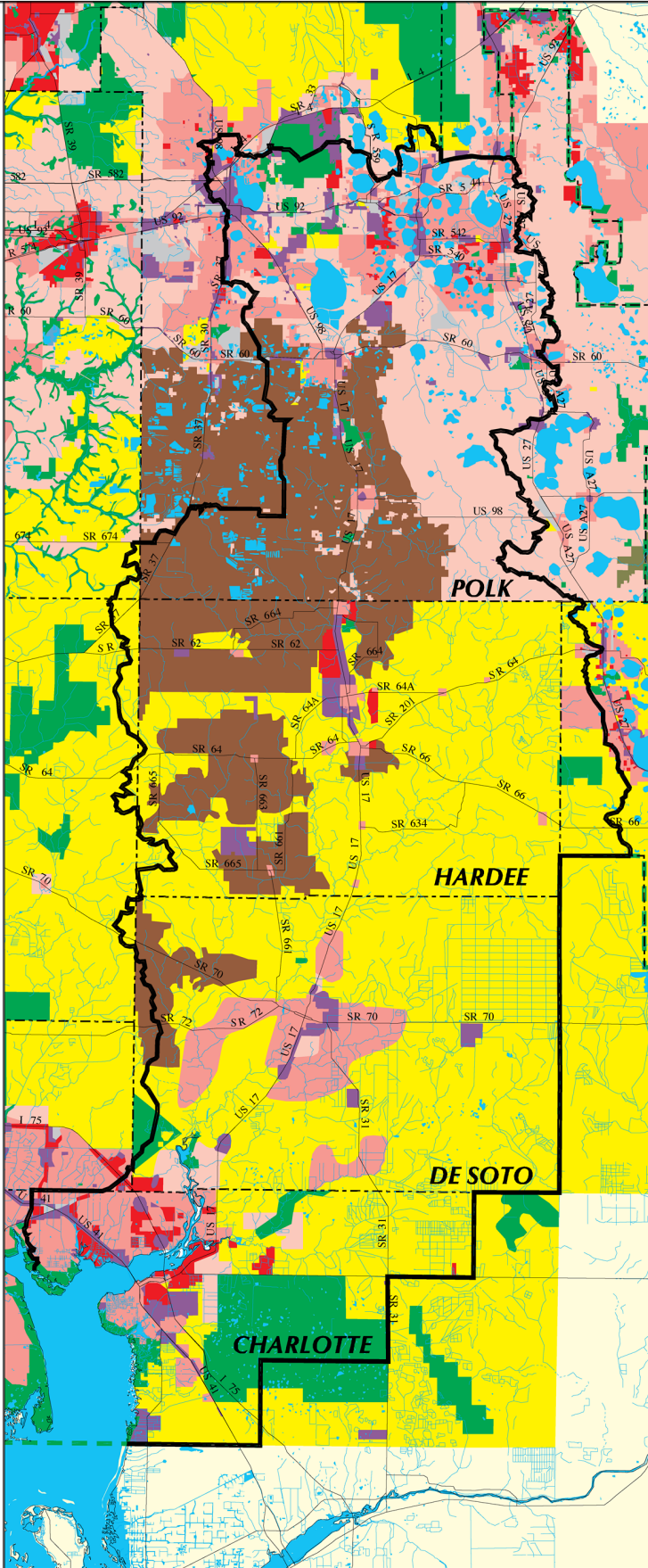


Peace River Watershed
Distribution of Generalized
Future Land Use, Ca. 2010

- Agriculture - 1 Unit Per 5 Acres and Less
- Estates - 1 Unit Per 5 Acres to 1 Unit Per Acre
- Single Family - 1 Unit Per Acres to 6 Units Per Acre
- Multi-Family - 6 Units Per Acre and Greater
- Industrial
- Commercial/Office
- Military
- Mining
- Preserve/Conservation
- Water
- Watershed Boundary
- County Boundary
- District Boundary



Future land use data were obtained from the Southwest Florida Regional Planning Council. The data are intended to provide a generalized future view of the region. For specific future land use categories, please contact the local government(s) in this region. The date of these data is circa 2010, as they were obtained from all the local governments, each of which uses a different date.



MAP 4

2 0 2 4 6 8 10 Miles

Map Creation Date: May 04, 2001