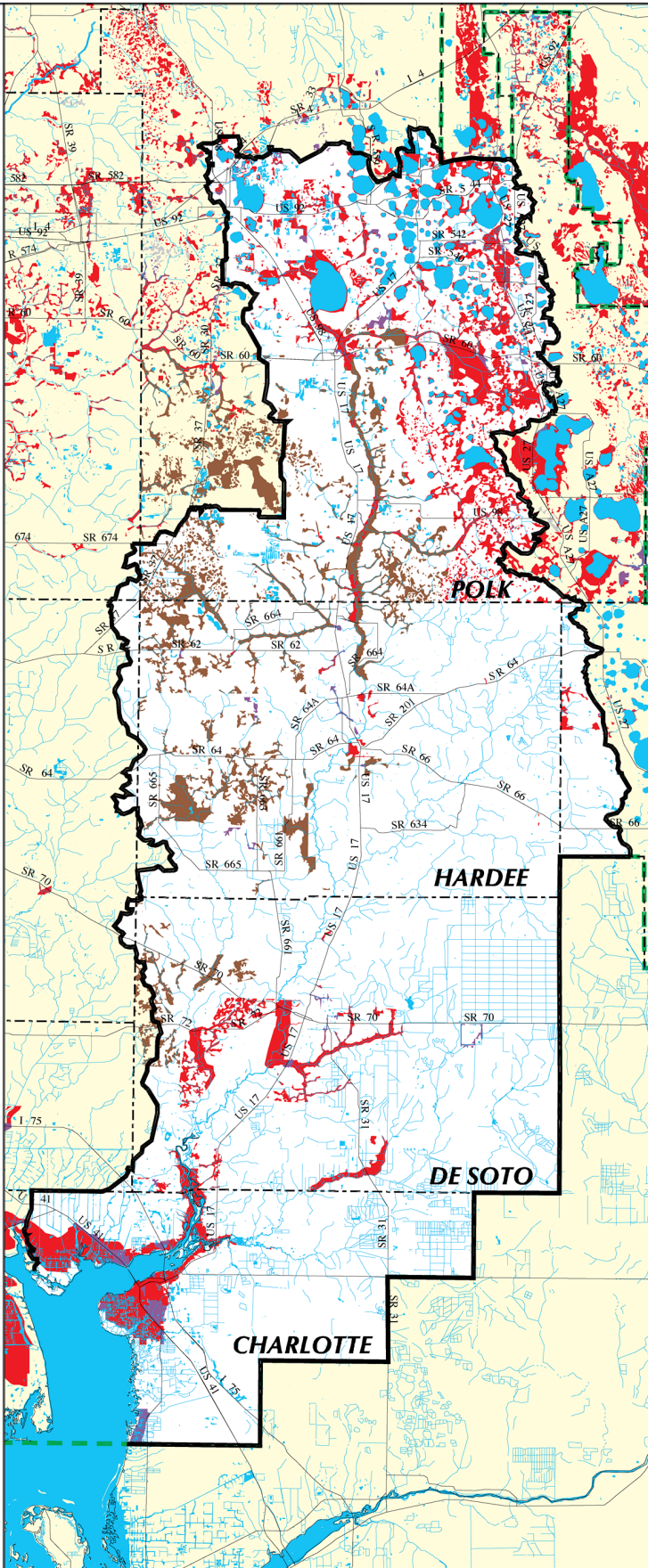


Peace River Watershed
 Distribution of Generalized
 Urban Future Land Use,
 Ca. 2010 Within the
 FEMA 100-Year Flood Zone

- Single or Multi-Family
- Commercial/Office/Military
- Industrial
- Mining
- Water
- Watershed Boundary
- County Boundary
- District Boundary



Future land use data were obtained from the Southwest Florida Regional Planning Council. The flood zone information was digitized from the Federal Emergency Management Agency's (FEMA) Flood Insurance Rate Map (FIRM) panels. These data were overlaid in the District's GIS to obtain the areas of urban future land use within the 100-year flood plain. The data are intended to provide a generalized view of the region.



MAP 15



2 0 2 4 6 8 10 Miles

Map Creation Date: May 03, 2001

Peace River Watershed Distribution of Generalized Urban Future Land Use, Ca. 2010 Within the FEMA 100-Year Flood Zone, May 3, 2001

Southwest Florida Water Management District, *Peace River Comprehensive Watershed Management Plan Atlas* (Brooksville, FL: Southwest Florida Water Management District, 2001)