

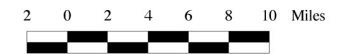
Tampa Bay/Anclote River Watershed  
Distribution of  
Soil Hydrologic Groups

- A - High Infiltration Rate
- A/D
- B - Moderate Infiltration Rate
- B/D
- C - Slow Infiltration Rate
- C/D
- D - Very Slow Infiltration Rate
- Undefined
- Open Water
- Watershed Boundary
- County Boundary

Soils data were obtained from USDA Natural Resource Conservation Service (formerly the USDA Soil Conservation Service) county soil surveys. The scale of the data corresponds to 1:24,000-scale USGS quadrangles. The data displayed here are soil map units aggregated by the soil hydrologic group. Please see the appropriate county soil survey for further information.



MAP 6



Map Creation Date: November 30, 2001

Tampa Bay/Anclote River Watershed Distribution of Soil Hydrologic Groups, November 30, 2001

Southwest Florida Water Management District, *Tampa Bay/Anclote River Comprehensive Watershed Management Plan Atlas* (Brooksville, FL: Southwest Florida Water Management District, 2001)

Downloaded from *Maps ETC*, on the web at <http://etc.usf.edu/maps> [map #f11856]