

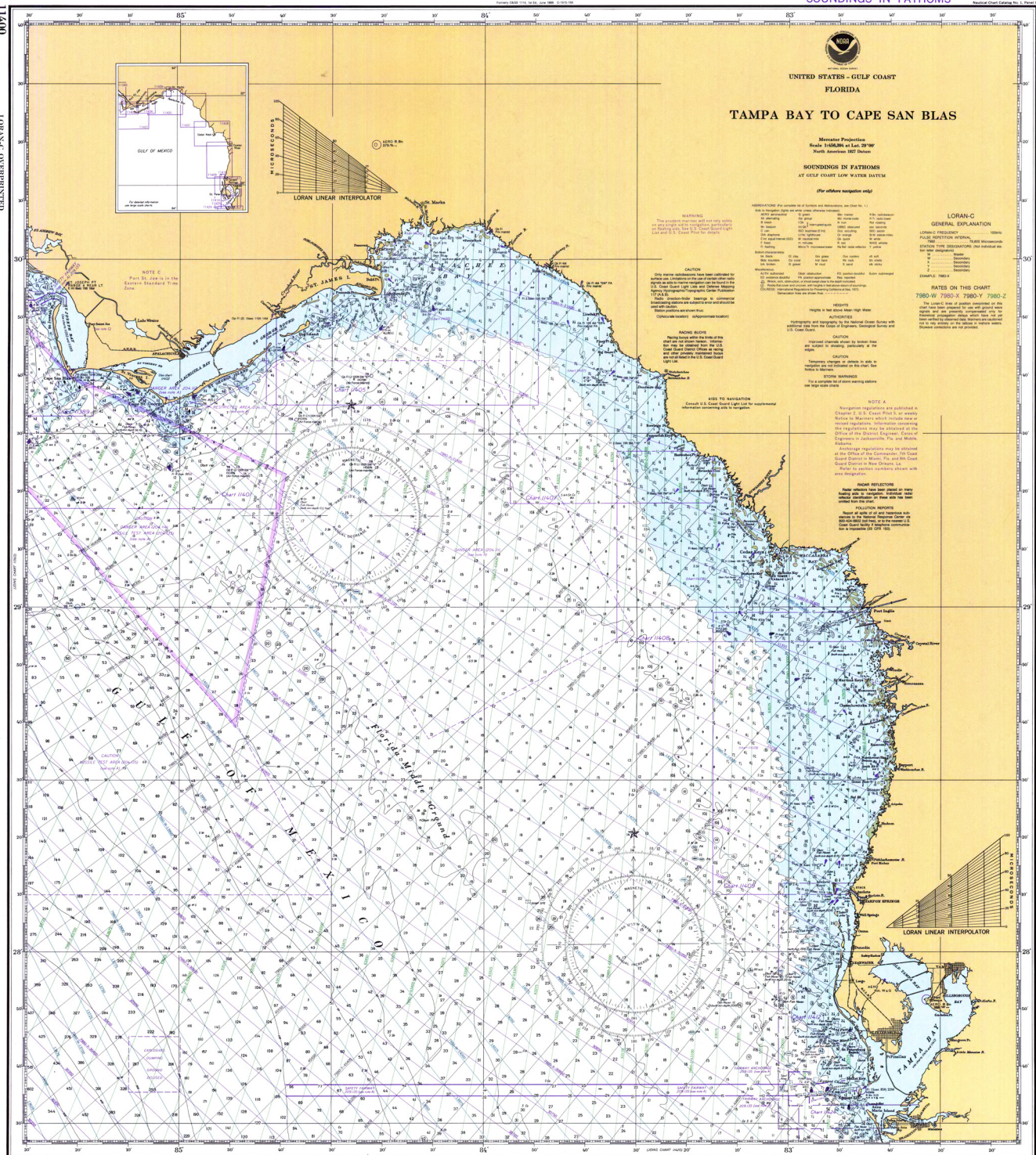
11400

LORAN-C OVERPRINTED

SOUNDINGS IN FATHOMS

11400

LORAN-C OVERPRINTED



11400 LORAN-C OVERPRINTED

CAUTION: This chart has been compiled from the best available information and is not guaranteed to be accurate. It is intended for use as a guide only and should not be relied upon for navigation.

SOUNDINGS IN FATHOMS

Published at Washington, D.C. U.S. DEPARTMENT OF COMMERCE NATIONAL OCEANIC AND ATMOSPHERIC ADMINISTRATION NATIONAL OCEAN SURVEY



(Tampa Bay to Cape San Blas)

11400 LORAN-C OVERPRINTED

Tampa Bay to Cape San Blas, circa 1981
 National Oceanic and Atmospheric Administration, *National Ocean Survey* (Washington, DC: U. S. Department of Commerce, 1981)