



UNITED STATES - EAST COAST  
FLORIDA  
**FORT PIERCE HARBOR**

Manator Projection  
Scale 1:110,000 of Latitude 27°28'

**SOUNDINGS IN FEET  
AT MEAN LOW WATER**

Place	Height referred to Mean of sounding (feet)			
	Mean	Mean	Mean	Extreme
Fort Pierce Inlet	2.6	1.3	0.0	-1.0
Fort Pierce	0.7	0.3	0.0	-1.0

373

1st Ed. Mar. 1938

**FORT PIERCE HARBOR**  
Tabulated from surveys by the Corps of Engineers - report to Sept. 1971 and surveys of May 1971

Name of Channel	Left side		Right side		Date of Survey	Length (feet)	Width (feet)	Depth (feet)
	outside quarter	inside quarter	outside quarter	inside quarter				
Fort Pierce Inlet	18.0	23.1	41.4	5.71	290-315	1.6	27-35	
Fort Pierce Inlet	14.3	18.7	18.7	5.71	215-260	1.2	25	

**STORM WARNINGS**  
The National Weather Service displays Florida Base Grid, east zone, in light green markings at the following representative locations:  
Fort Pierce C.G. Station (27°28'49"N)

**ORTHOPHOTOGRAHY**  
The topography on this chart has been compiled by orthophotographic methods in which photo air and relief distortions have been removed. This method results in a practically rectified photograph of the earth's surface, where all features are in their correct horizontal (orthographic) position.

**AUTHORITIES**  
Hydrographic and topographic by the Coast and Geodetic Survey with additions and revisions from the Corps of Engineers and Geodetic Survey.

**SUPPLEMENTAL INFORMATION**  
Current U.S. Coast Pilot # 8 for important supplemental information.

**HEIGHTS**  
Height in feet above Mean High Water

**ABBREVIATIONS** (For complete list of Symbols and Abbreviations see Chart No. 1)

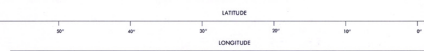
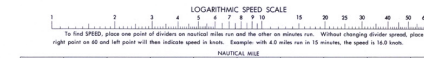
Light signals and white water reference indicators:  
A, float; B, bell; C, buoy; D, spar; E, spar; F, spar; G, spar; H, spar; I, spar; J, spar; K, spar; L, spar; M, spar; N, spar; O, spar; P, spar; Q, spar; R, spar; S, spar; T, spar; U, spar; V, spar; W, spar; X, spar; Y, spar; Z, spar; AA, spar; AB, spar; AC, spar; AD, spar; AE, spar; AF, spar; AG, spar; AH, spar; AI, spar; AJ, spar; AK, spar; AL, spar; AM, spar; AN, spar; AO, spar; AP, spar; AQ, spar; AR, spar; AS, spar; AT, spar; AU, spar; AV, spar; AW, spar; AX, spar; AY, spar; AZ, spar; BA, spar; BB, spar; BC, spar; BD, spar; BE, spar; BF, spar; BG, spar; BH, spar; BI, spar; BJ, spar; BK, spar; BL, spar; BM, spar; BN, spar; BO, spar; BP, spar; BQ, spar; BR, spar; BS, spar; BT, spar; BU, spar; BV, spar; BW, spar; BX, spar; BY, spar; BZ, spar; CA, spar; CB, spar; CC, spar; CD, spar; CE, spar; CF, spar; CG, spar; CH, spar; CI, spar; CJ, spar; CK, spar; CL, spar; CM, spar; CN, spar; CO, spar; CP, spar; CQ, spar; CR, spar; CS, spar; CT, spar; CU, spar; CV, spar; CW, spar; CX, spar; CY, spar; CZ, spar; DA, spar; DB, spar; DC, spar; DD, spar; DE, spar; DF, spar; DG, spar; DH, spar; DI, spar; DJ, spar; DK, spar; DL, spar; DM, spar; DN, spar; DO, spar; DP, spar; DQ, spar; DR, spar; DS, spar; DT, spar; DU, spar; DV, spar; DW, spar; DX, spar; DY, spar; DZ, spar; EA, spar; EB, spar; EC, spar; ED, spar; EE, spar; EF, spar; EG, spar; EH, spar; EI, spar; EJ, spar; EK, spar; EL, spar; EM, spar; EN, spar; EO, spar; EP, spar; EQ, spar; ER, spar; ES, spar; ET, spar; EU, spar; EV, spar; EW, spar; EX, spar; EY, spar; EZ, spar; FA, spar; FB, spar; FC, spar; FD, spar; FE, spar; FF, spar; FG, spar; FH, spar; FI, spar; FJ, spar; FK, spar; FL, spar; FM, spar; FN, spar; FO, spar; FP, spar; FQ, spar; FR, spar; FS, spar; FT, spar; FU, spar; FV, spar; FW, spar; FX, spar; FY, spar; FZ, spar; GA, spar; GB, spar; GC, spar; GD, spar; GE, spar; GF, spar; GG, spar; GH, spar; GI, spar; GJ, spar; GK, spar; GL, spar; GM, spar; GN, spar; GO, spar; GP, spar; GQ, spar; GR, spar; GS, spar; GT, spar; GU, spar; GV, spar; GW, spar; GX, spar; GY, spar; GZ, spar; HA, spar; HB, spar; HC, spar; HD, spar; HE, spar; HF, spar; HG, spar; HH, spar; HI, spar; HJ, spar; HK, spar; HL, spar; HM, spar; HN, spar; HO, spar; HP, spar; HQ, spar; HR, spar; HS, spar; HT, spar; HU, spar; HV, spar; HW, spar; HX, spar; HY, spar; HZ, spar; IA, spar; IB, spar; IC, spar; ID, spar; IE, spar; IF, spar; IG, spar; IH, spar; II, spar; IJ, spar; IK, spar; IL, spar; IM, spar; IN, spar; IO, spar; IP, spar; IQ, spar; IR, spar; IS, spar; IT, spar; IU, spar; IV, spar; IW, spar; IX, spar; IY, spar; IZ, spar; JA, spar; JB, spar; JC, spar; JD, spar; JE, spar; JF, spar; JG, spar; JH, spar; JI, spar; JJ, spar; JK, spar; JL, spar; JM, spar; JN, spar; JO, spar; JP, spar; JQ, spar; JR, spar; JS, spar; JT, spar; JU, spar; JV, spar; JW, spar; JX, spar; JY, spar; JZ, spar; KA, spar; KB, spar; KC, spar; KD, spar; KE, spar; KF, spar; KG, spar; KH, spar; KI, spar; KJ, spar; KK, spar; KL, spar; KM, spar; KN, spar; KO, spar; KP, spar; KQ, spar; KR, spar; KS, spar; KT, spar; KU, spar; KV, spar; KW, spar; KX, spar; KY, spar; KZ, spar; LA, spar; LB, spar; LC, spar; LD, spar; LE, spar; LF, spar; LG, spar; LH, spar; LI, spar; LJ, spar; LK, spar; LL, spar; LM, spar; LN, spar; LO, spar; LP, spar; LQ, spar; LR, spar; LS, spar; LT, spar; LU, spar; LV, spar; LW, spar; LX, spar; LY, spar; LZ, spar; MA, spar; MB, spar; MC, spar; MD, spar; ME, spar; MF, spar; MG, spar; MH, spar; MI, spar; MJ, spar; MK, spar; ML, spar; MM, spar; MN, spar; MO, spar; MP, spar; MQ, spar; MR, spar; MS, spar; MT, spar; MU, spar; MV, spar; MW, spar; MX, spar; MY, spar; MZ, spar; NA, spar; NB, spar; NC, spar; ND, spar; NE, spar; NF, spar; NG, spar; NH, spar; NI, spar; NJ, spar; NK, spar; NL, spar; NM, spar; NN, spar; NO, spar; NP, spar; NQ, spar; NR, spar; NS, spar; NT, spar; NU, spar; NV, spar; NW, spar; NX, spar; NY, spar; NZ, spar; OA, spar; OB, spar; OC, spar; OD, spar; OE, spar; OF, spar; OG, spar; OH, spar; OI, spar; OJ, spar; OK, spar; OL, spar; OM, spar; ON, spar; OO, spar; OP, spar; OQ, spar; OR, spar; OS, spar; OT, spar; OU, spar; OV, spar; OW, spar; OX, spar; OY, spar; OZ, spar; PA, spar; PB, spar; PC, spar; PD, spar; PE, spar; PF, spar; PG, spar; PH, spar; PI, spar; PJ, spar; PK, spar; PL, spar; PM, spar; PN, spar; PO, spar; PP, spar; PQ, spar; PR, spar; PS, spar; PT, spar; PU, spar; PV, spar; PW, spar; PX, spar; PY, spar; PZ, spar; QA, spar; QB, spar; QC, spar; QD, spar; QE, spar; QF, spar; QG, spar; QH, spar; QI, spar; QJ, spar; QK, spar; QL, spar; QM, spar; QN, spar; QO, spar; QP, spar; QQ, spar; QR, spar; QS, spar; QT, spar; QU, spar; QV, spar; QW, spar; QX, spar; QY, spar; QZ, spar; RA, spar; RB, spar; RC, spar; RD, spar; RE, spar; RF, spar; RG, spar; RH, spar; RI, spar; RJ, spar; RK, spar; RL, spar; RM, spar; RN, spar; RO, spar; RP, spar; RQ, spar; RR, spar; RS, spar; RT, spar; RU, spar; RV, spar; RW, spar; RX, spar; RY, spar; RZ, spar; SA, spar; SB, spar; SC, spar; SD, spar; SE, spar; SF, spar; SG, spar; SH, spar; SI, spar; SJ, spar; SK, spar; SL, spar; SM, spar; SN, spar; SO, spar; SP, spar; SQ, spar; SR, spar; SS, spar; ST, spar; SU, spar; SV, spar; SW, spar; SX, spar; SY, spar; SZ, spar; TA, spar; TB, spar; TC, spar; TD, spar; TE, spar; TF, spar; TG, spar; TH, spar; TI, spar; TJ, spar; TK, spar; TL, spar; TM, spar; TN, spar; TO, spar; TP, spar; TQ, spar; TR, spar; TS, spar; TT, spar; TU, spar; TV, spar; TW, spar; TX, spar; TY, spar; TZ, spar; UA, spar; UB, spar; UC, spar; UD, spar; UE, spar; UF, spar; UG, spar; UH, spar; UI, spar; UJ, spar; UK, spar; UL, spar; UM, spar; UN, spar; UO, spar; UP, spar; UQ, spar; UR, spar; US, spar; UT, spar; UY, spar; UZ, spar; VA, spar; VB, spar; VC, spar; VD, spar; VE, spar; VF, spar; VG, spar; VH, spar; VI, spar; VJ, spar; VK, spar; VL, spar; VM, spar; VN, spar; VO, spar; VP, spar; VQ, spar; VR, spar; VS, spar; VT, spar; VU, spar; VV, spar; VW, spar; VX, spar; VY, spar; VZ, spar; WA, spar; WB, spar; WC, spar; WD, spar; WE, spar; WF, spar; WG, spar; WH, spar; WI, spar; WJ, spar; WK, spar; WL, spar; WM, spar; WN, spar; WO, spar; WP, spar; WQ, spar; WR, spar; WS, spar; WT, spar; WY, spar; WZ, spar; XA, spar; XB, spar; XC, spar; XD, spar; XE, spar; XF, spar; XG, spar; XH, spar; XI, spar; XJ, spar; XK, spar; XL, spar; XM, spar; XN, spar; XO, spar; XP, spar; XQ, spar; XR, spar; XS, spar; XT, spar; XU, spar; XV, spar; XW, spar; XX, spar; XY, spar; XZ, spar; YA, spar; YB, spar; YC, spar; YD, spar; YE, spar; YF, spar; YG, spar; YH, spar; YI, spar; YJ, spar; YK, spar; YL, spar; YM, spar; YN, spar; YO, spar; YP, spar; YQ, spar; YR, spar; YS, spar; YT, spar; YU, spar; YV, spar; YW, spar; YX, spar; YY, spar; YZ, spar; ZA, spar; ZB, spar; ZC, spar; ZD, spar; ZE, spar; ZF, spar; ZG, spar; ZH, spar; ZI, spar; ZJ, spar; ZK, spar; ZL, spar; ZM, spar; ZN, spar; ZO, spar; ZP, spar; ZQ, spar; ZR, spar; ZS, spar; ZT, spar; ZU, spar; ZV, spar; ZW, spar; ZX, spar; ZY, spar; ZZ, spar;

**CAUTION**  
Only marine radio beacons have been collected for surface use. Limitations on the use of surface radio beacons are given in the U.S. Coast Guard Light List and Defense Mapping Agency Hydrographic Center Publication HO 117 (A,B).

Radar direction-finder bearings to commercial broadcasting stations are subject to error and should be used with caution.  
Station positions are shown thus: (Automatic location) (Approximate location)

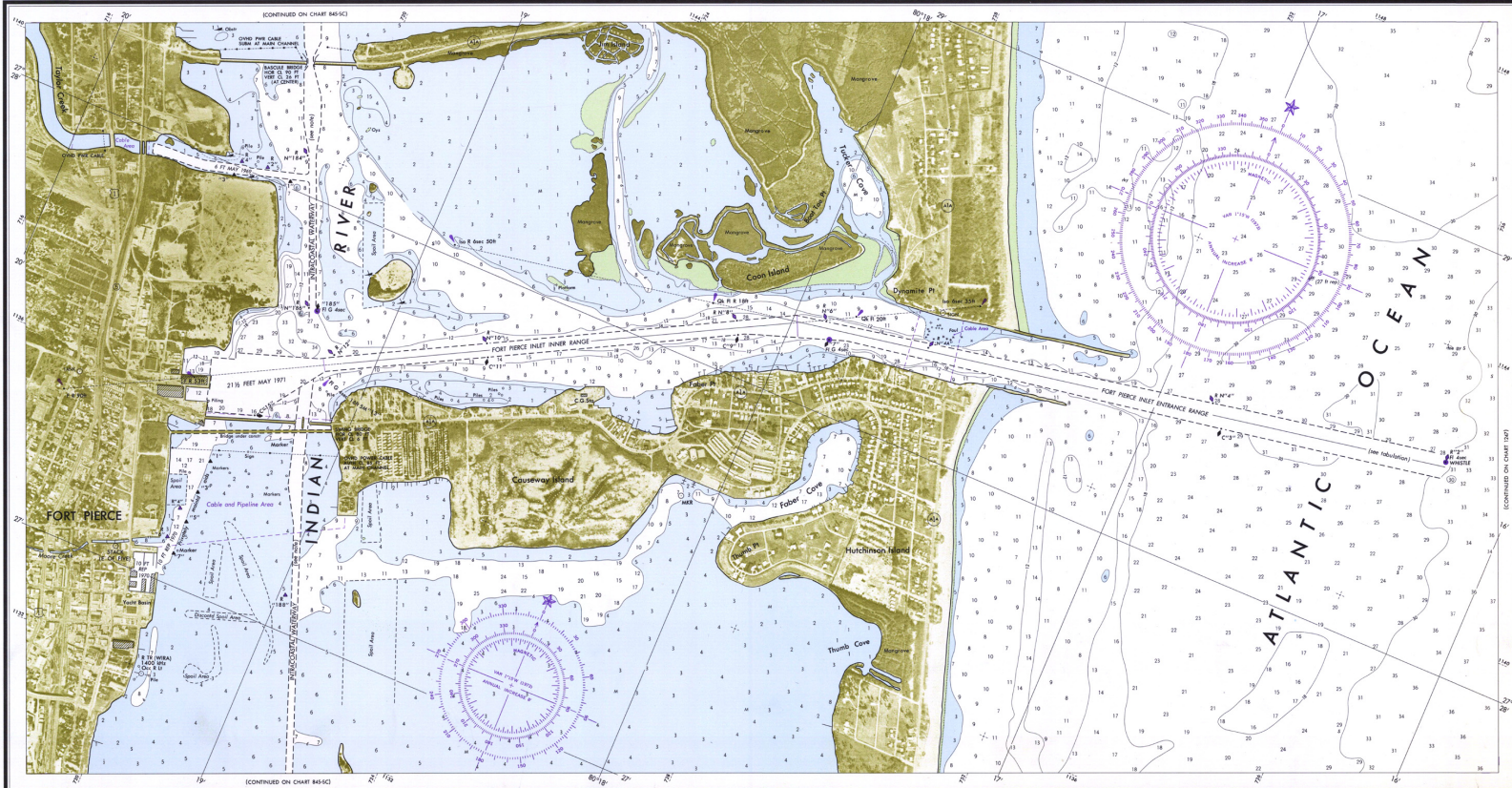
**CAUTION**  
Temporary changes or defects in aids to navigation are not indicated on this chart. See Notices to Mariners.  
Improved channels shown by broken lines are subject to shoaling, particularly at the edges.

**INHAUGRATED WATERWAY**  
Project Depth:  
12 feet Mark, Fla. to Fort Pierce, Fla.  
10 feet Fort Pierce, Fla. to Anclote, Fla.  
7 feet Anclote, Fla. to Cross Bay, Florida Bay.  
The remaining depths are published in the United States Coast Guard Local Notice to Mariners.



**SOUNDINGS IN FEET**

582



582  
6th Ed., June 16/73

**CAUTION**  
This chart has been corrected from the Notice to Mariners published weekly by the Defense Mapping Agency Hydrographic Center and the local notice to Mariners issued periodically by the U.S. Coast Guard. Refer to the prior date shown in the lower left hand corner.

**SOUNDINGS IN FEET**  
From the Image Archives of the Historical Map & Chart Collection  
Office of Coast Survey/National Ocean Services/NOAA

Published at Washington, D. C.  
U. S. DEPARTMENT OF COMMERCE  
NATIONAL OCEANIC AND ATMOSPHERIC ADMINISTRATION  
NATIONAL OCEAN SURVEY

FATHOMS	1	2	3	4	5	6	7	8	9	10	11	12	13	14	15	16	17	18	19	20
FEET	6	12	18	24	30	36	42	48	54	60	66	72	78	84	90	96	102	108	114	120
METERS	1.1	2.3	3.4	4.6	5.7	6.9	8.0	9.1	10.3	11.4	12.5	13.7	14.8	15.9	17.1	18.3	19.4	20.6	21.7	22.9

**FORT PIERCE HARBOR**  
SOUNDINGS IN FEET - SCALE 1:110,000  
**C&GS 582**  
(N.O. 1173)