



UNITED STATES - GULF COAST
FLORIDA

FLORIDA KEYS
SOMBRERO KEY TO DRY TORTUGAS

CAUTION
Readers are advised to consult the
Notice to Mariners for the latest
information.

Minimum Protection
Scale 1:100,000 at Lat 25°00'

SOUNDINGS IN FATHOMS
AT MEAN LOW WATER

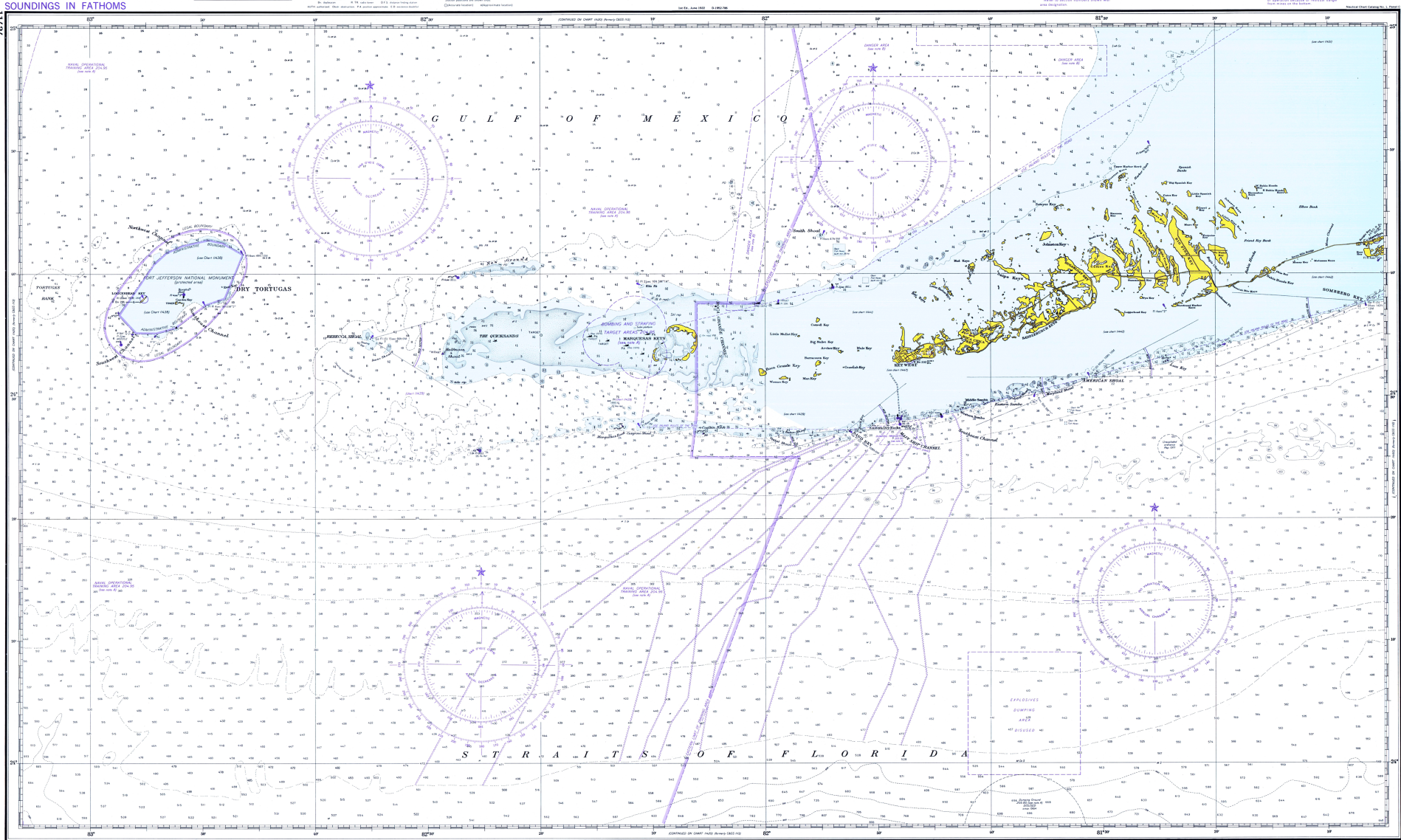
NOTE 4
Regulation regulations are published in
Chapter 2 of the Code of Federal Regulations
under the authority of the Secretary of
Commerce. Information concerning
regulations may be obtained from the
Office of the District Engineer, Coast
and Geodetic Survey, U.S. Coast
Guard, Miami, Florida.

NOTE 5
This publication is published in
conformance with the International
Hydrographic Organization's
Hydrographic Symbols and Abbreviations,
Edition 1981, and the International
Hydrographic Organization's
Hydrographic Symbols and Abbreviations,
Edition 1981, and the International
Hydrographic Organization's
Hydrographic Symbols and Abbreviations,
Edition 1981.

NOTE 6
This publication is published in
conformance with the International
Hydrographic Organization's
Hydrographic Symbols and Abbreviations,
Edition 1981, and the International
Hydrographic Organization's
Hydrographic Symbols and Abbreviations,
Edition 1981, and the International
Hydrographic Organization's
Hydrographic Symbols and Abbreviations,
Edition 1981.

NEW CHART NUMBERING SYSTEM

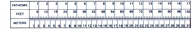
Chart Number	Old System	New System
11434	11434	11434
11435	11435	11435
11436	11436	11436
11437	11437	11437
11438	11438	11438
11439	11439	11439
11440	11440	11440
11441	11441	11441
11442	11442	11442
11443	11443	11443
11444	11444	11444
11445	11445	11445
11446	11446	11446
11447	11447	11447
11448	11448	11448
11449	11449	11449
11450	11450	11450
11451	11451	11451
11452	11452	11452
11453	11453	11453
11454	11454	11454
11455	11455	11455
11456	11456	11456
11457	11457	11457
11458	11458	11458
11459	11459	11459
11460	11460	11460
11461	11461	11461
11462	11462	11462
11463	11463	11463
11464	11464	11464
11465	11465	11465
11466	11466	11466
11467	11467	11467
11468	11468	11468
11469	11469	11469
11470	11470	11470
11471	11471	11471
11472	11472	11472
11473	11473	11473
11474	11474	11474
11475	11475	11475
11476	11476	11476
11477	11477	11477
11478	11478	11478
11479	11479	11479
11480	11480	11480
11481	11481	11481
11482	11482	11482
11483	11483	11483
11484	11484	11484
11485	11485	11485
11486	11486	11486
11487	11487	11487
11488	11488	11488
11489	11489	11489
11490	11490	11490
11491	11491	11491
11492	11492	11492
11493	11493	11493
11494	11494	11494
11495	11495	11495
11496	11496	11496
11497	11497	11497
11498	11498	11498
11499	11499	11499
11500	11500	11500



11434
Formerly C&GS 359

Published at Washington, D.C.
U.S. DEPARTMENT OF COMMERCE
NATIONAL OCEANIC AND ATMOSPHERIC ADMINISTRATION
NATIONAL OCEAN SERVICE

SOUNDINGS IN FATHOMS



(Sombrero Key to Dry Tortugas)
SOUNDINGS IN FATHOMS: SCALE 1:100,000

11434
Formerly C&GS 359

Florida Keys: Sombrero Key to Dry Tortugas, 1974
National Oceanic and Atmospheric Administration, United States - Gulf Coast, Florida (Washington, DC: U.S. Department of Commerce, 1974)
Downloaded from Maps ETC, on the web at <http://etc.usf.edu/maps> [map #f3586]