



UNITED STATES - GULF COAST  
FLORIDA

FLORIDA KEYS  
SOMBRERO KEY TO DRY TORTUGAS

SCALE  
Nautical Miles  
Statute Miles  
Kilometers

Minimum Protection  
Scale 1:100,000 at Lat 25°00'

SOUNDINGS IN FATHOMS  
AT MEAN LOW WATER

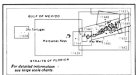
NOTE 4  
Regulation of traffic is provided in Chapter 2 of the General Regulations for the Government of the United States of America, which may be obtained from the Office of the District Engineer, Coast and Geodetic Survey, Washington, D.C.

NOTE 5  
This publication is not to be used as a basis for navigation unless it is used in conjunction with the latest Notices to Mariners.

NOTE 6  
This publication is not to be used as a basis for navigation unless it is used in conjunction with the latest Notices to Mariners.

NEW CHART NUMBERING SYSTEM

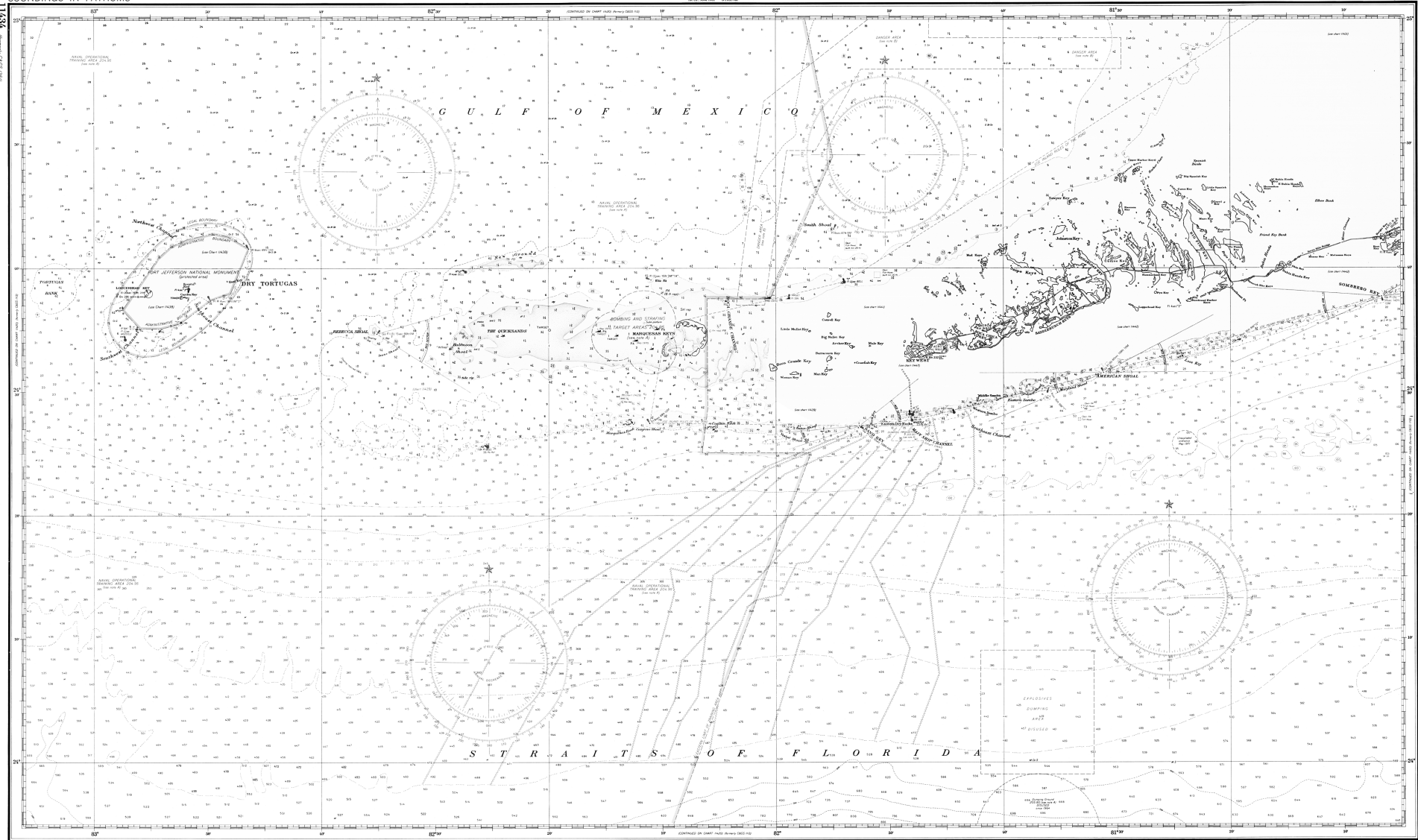
Chart Number	New System	Old System
11434	11434	11434
11435	11435	11435
11436	11436	11436
11437	11437	11437
11438	11438	11438
11439	11439	11439
11440	11440	11440
11441	11441	11441
11442	11442	11442
11443	11443	11443
11444	11444	11444
11445	11445	11445
11446	11446	11446
11447	11447	11447
11448	11448	11448
11449	11449	11449
11450	11450	11450
11451	11451	11451
11452	11452	11452
11453	11453	11453
11454	11454	11454
11455	11455	11455
11456	11456	11456
11457	11457	11457
11458	11458	11458
11459	11459	11459
11460	11460	11460



ABBREVIATIONS - (See also the back of this chart)

AL	Aluminum
AS	Asbestos
BR	Brass
CL	Copper
CR	Cast Iron
CU	Copper
GL	Galvanized Iron
GR	Green Paint
IR	Iron
LA	Lead
LS	Lead
MS	Mild Steel
NI	Nickel
PK	Paint
PL	Paint
PT	Paint
SP	Steel
ST	Steel
TR	Tin
ZN	Zinc

QUALITY  
This chart was prepared from the latest available information and is believed to be correct. It is subject to change without notice. The U.S. Coast and Geodetic Survey is not responsible for errors or omissions.



Florida Keys: Sombrero Key to Dry Tortugas, 1974  
National Oceanic and Atmospheric Administration, United States - Gulf Coast, Florida (Washington, DC: U.S. Department of Commerce, 1974)  
Downloaded from Maps ETC, on the web at <http://etc.usf.edu/maps> [map #f3586]