

  
 UNITED STATES - EAST COAST  
 FLORIDA  
**PORT CANAVERAL**  
 SOUNDINGS IN FEET  
 Scale 1:10,000 or latitude 28°24'30"

**NEW CHART NUMBERING SYSTEM**  
 The National Ocean Survey, in cooperation with the Defense Mapping Agency Hydrographic Center, is the process of changing the Navy's traditional chart numbering system. See Notice to Mariners No. 12, May 12, 1976, or Revision Chart Catalog, for cross references of old and new chart numbers.

**ABBREVIATIONS** For symbols for lights and daymarks, see Chart No. 1.

Color	Meaning	Color	Meaning
White	Daymark	Red	Light
Black	Light	Green	Daymark
Yellow	Light	Blue	Daymark
Purple	Light	Brown	Daymark
Pink	Light	Orange	Daymark
Grey	Light	Black	Daymark
Red	Light	White	Daymark
Green	Light	Black	Daymark
Blue	Light	White	Daymark
Brown	Light	White	Daymark
Orange	Light	White	Daymark
Black	Light	White	Daymark

**CAUTION**  
 Temporary changes or defects in aids to navigation are indicated by the chart. Changes are indicated by broken lines or by the word "Temporary" or "Altered" in the text.

**CAUTION**  
 Only those hydrographic data have been collected for this chart. Soundings in the area adjacent to the chart are not necessarily accurate. Hydrographic data are subject to change without notice.

**CAUTION**  
 Hydrographic data are subject to change without notice. Hydrographic data are subject to change without notice.

**INTRUSIONAL WATERWAY**  
 Use Chart 11485. The channel depths and widths are not shown.

**NOTE 4**  
 Navigation regulations are published in Chapter 2, U.S. Coast Pilot, or in any other publication. The U.S. Coast Pilot, U.S. Coast Survey, and U.S. Coast and Geodetic Survey publications are available from the Superintendent of Naval Charts, Washington, D.C. 20370.

**NOTE 5**  
 Regulations are published in Chapter 10, U.S. Coast Pilot, or in any other publication. The U.S. Coast Pilot, U.S. Coast Survey, and U.S. Coast and Geodetic Survey publications are available from the Superintendent of Naval Charts, Washington, D.C. 20370.

**NOTE 6**  
 Symbols for other marks should contain number and name. Symbols for other marks should contain number and name. Symbols for other marks should contain number and name.

**NOTE 7**  
 Symbols for other marks should contain number and name. Symbols for other marks should contain number and name. Symbols for other marks should contain number and name.

**NOTE 8**  
 Symbols for other marks should contain number and name. Symbols for other marks should contain number and name. Symbols for other marks should contain number and name.

**NOTE 9**  
 Symbols for other marks should contain number and name. Symbols for other marks should contain number and name. Symbols for other marks should contain number and name.

**PORT CANAVERAL SOUNDING**  
 List of the names of the vessels which have been sighted in the Port of Canaveral.

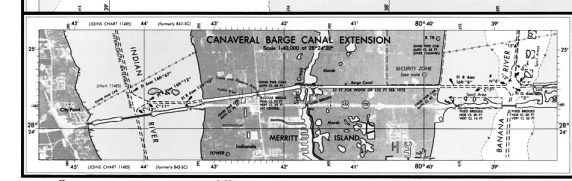
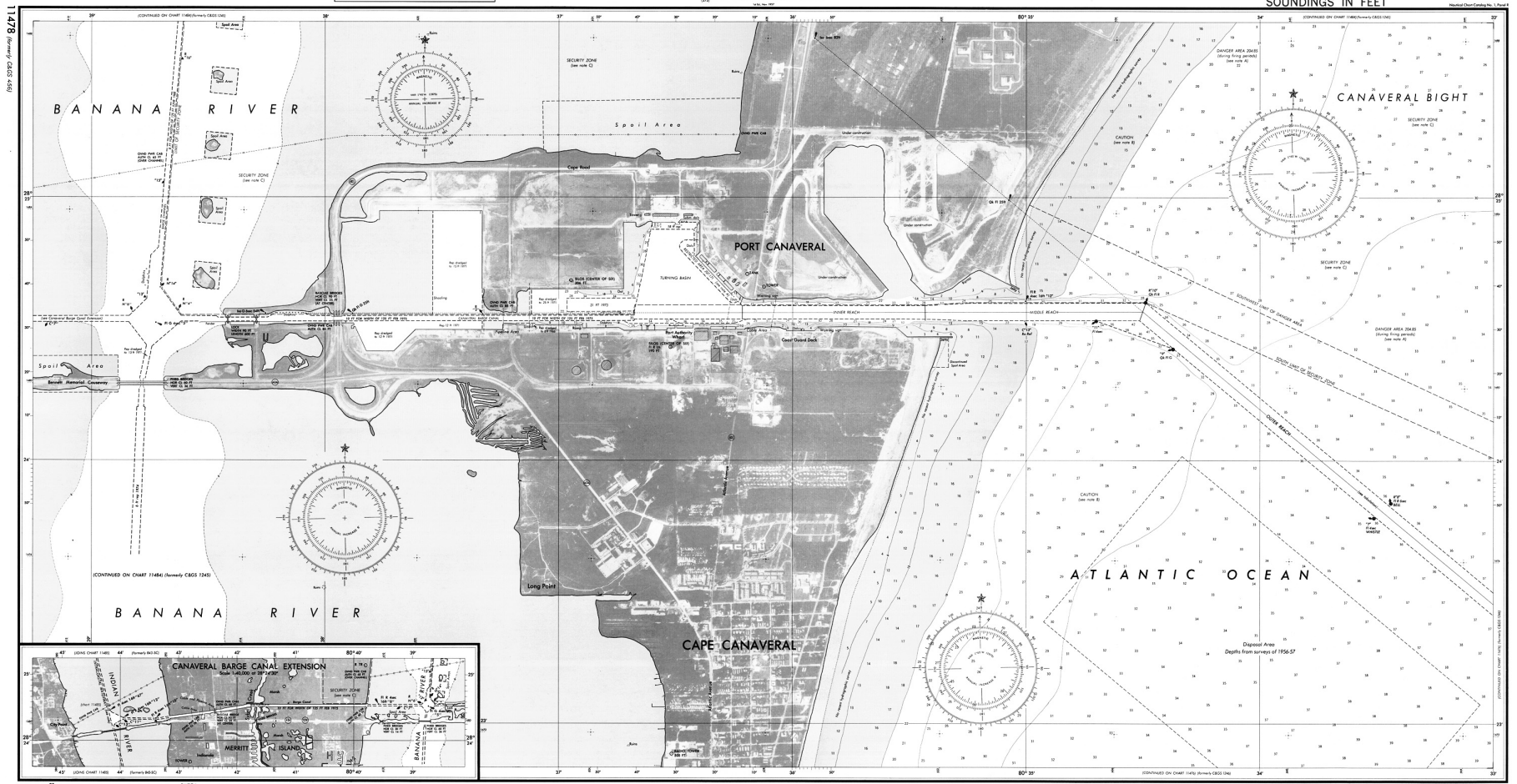
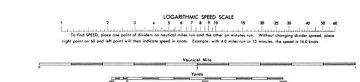
Name of Vessel	Type	Color	Light	Daymark	Height	Range	Chart No.
Star Line	Light	Red	100	100	100	100	100
Star Line	Light	Red	100	100	100	100	100
Star Line	Light	Red	100	100	100	100	100
Star Line	Light	Red	100	100	100	100	100
Star Line	Light	Red	100	100	100	100	100
Star Line	Light	Red	100	100	100	100	100
Star Line	Light	Red	100	100	100	100	100
Star Line	Light	Red	100	100	100	100	100
Star Line	Light	Red	100	100	100	100	100
Star Line	Light	Red	100	100	100	100	100

**REMARKS**  
 The present soundings are not shown on the chart and are not shown on the chart and are not shown on the chart.

**REMARKS**  
 The present soundings are not shown on the chart and are not shown on the chart and are not shown on the chart.

**TIME INFORMATION**

Time	Meaning	Time	Meaning
100	Light	100	Light
100	Light	100	Light
100	Light	100	Light
100	Light	100	Light
100	Light	100	Light
100	Light	100	Light
100	Light	100	Light
100	Light	100	Light
100	Light	100	Light
100	Light	100	Light



**Port Canaveral, 1975**  
 National Oceanic and Atmospheric Administration, *United States - East Coast Florida* (Washington, DC: U.S. Department of Commerce, 1975)  
 Downloaded from *Maps ETC*, on the web at <http://etc.usf.edu/maps> [map #f3842]