

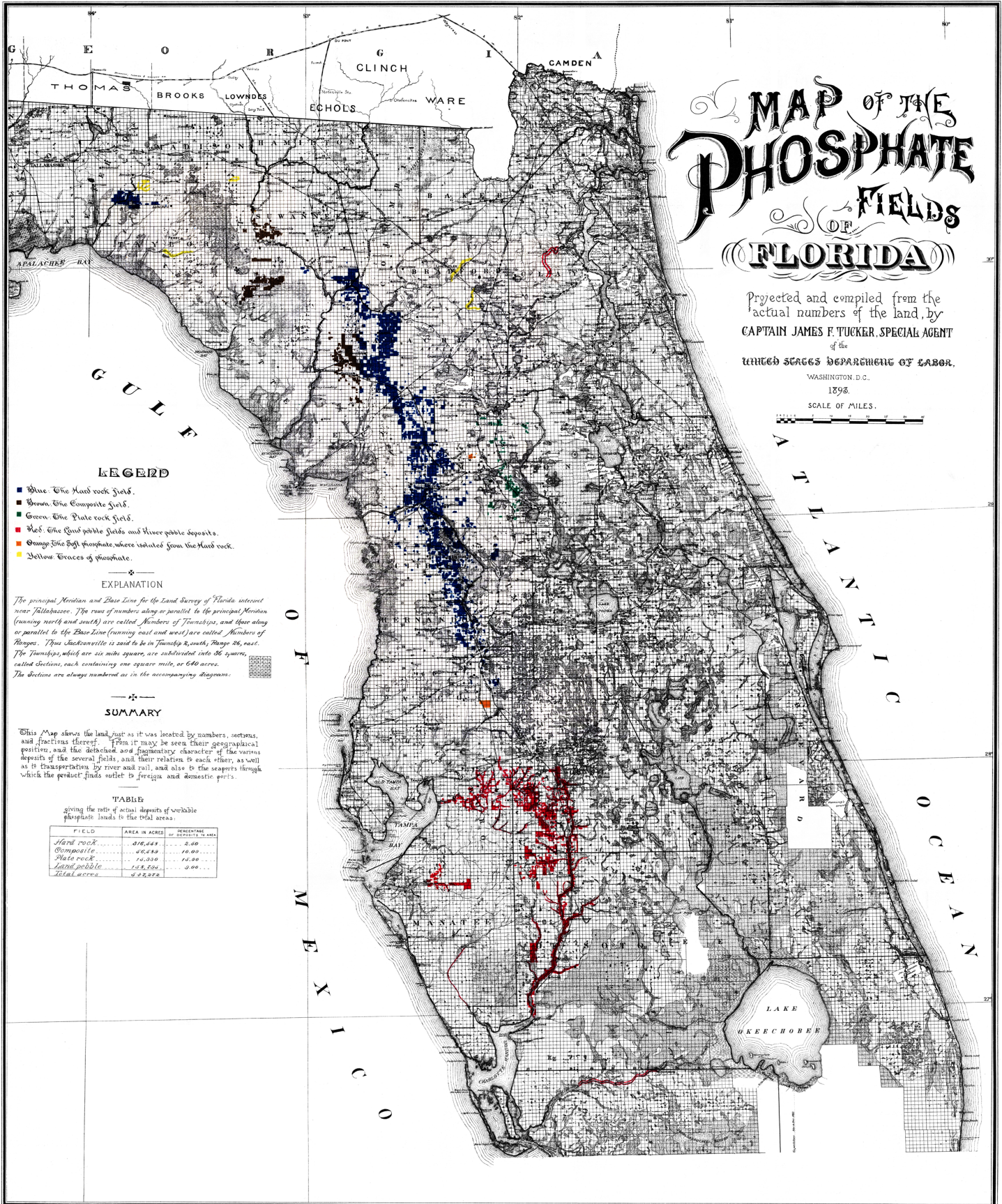
# MAP OF THE PHOSPHATE FIELDS OF FLORIDA

Projected and compiled from the actual numbers of the land, by  
CAPTAIN JAMES F. TUCKER, SPECIAL AGENT  
of the  
UNITED STATES DEPARTMENT OF LABOR.

WASHINGTON, D. C.

1898.

SCALE OF MILES.



## LEGEND

- Blue. The Hard rock field.
- Brown. The Composite field.
- Green. The Plate rock field.
- Red. The Sand pebble fields and river pebble deposits.
- Orange. The Best phosphate where isolated from the Hard rock.
- Yellow. Traces of phosphate.

## EXPLANATION

The principal Meridian and Base Line for the Land Survey of Florida intersect near Tallahassee. The rows of numbers along or parallel to the principal Meridian (running north and south) are called *Numbers of Townships*, and those along or parallel to the Base Line (running east and west) are called *Numbers of Ranges*. Thus Jacksonville is said to be in Township 8, south, Range 26, east. The Townships, which are six miles square, are subdivided into 36 squares, called *Sections*, each containing one square mile, or 640 acres. The *Sections* are always numbered as in the accompanying diagram.

## SUMMARY

This Map shows the land, just as it was located by numbers, sections, and fractions thereof. From it may be seen their geographical position, and the distinct and fragmentary character of the various deposits of the several fields, and their relation to each other, as well as its transportation by river and rail, and also to the seaports through which the product finds outlet to foreign and domestic ports.

## TABLE

giving the ratio of actual deposits of workable phosphate lands to the total area.

FIELD	AREA IN ACRES	PERCENTAGE OF DEPOSITIVE AREA
Hard rock	876,548	2.00
Composite	402,839	10.00
Plate rock	14,930	14.00
Sand pebble	1,238,594	3.00
Total acres	2,532,911	