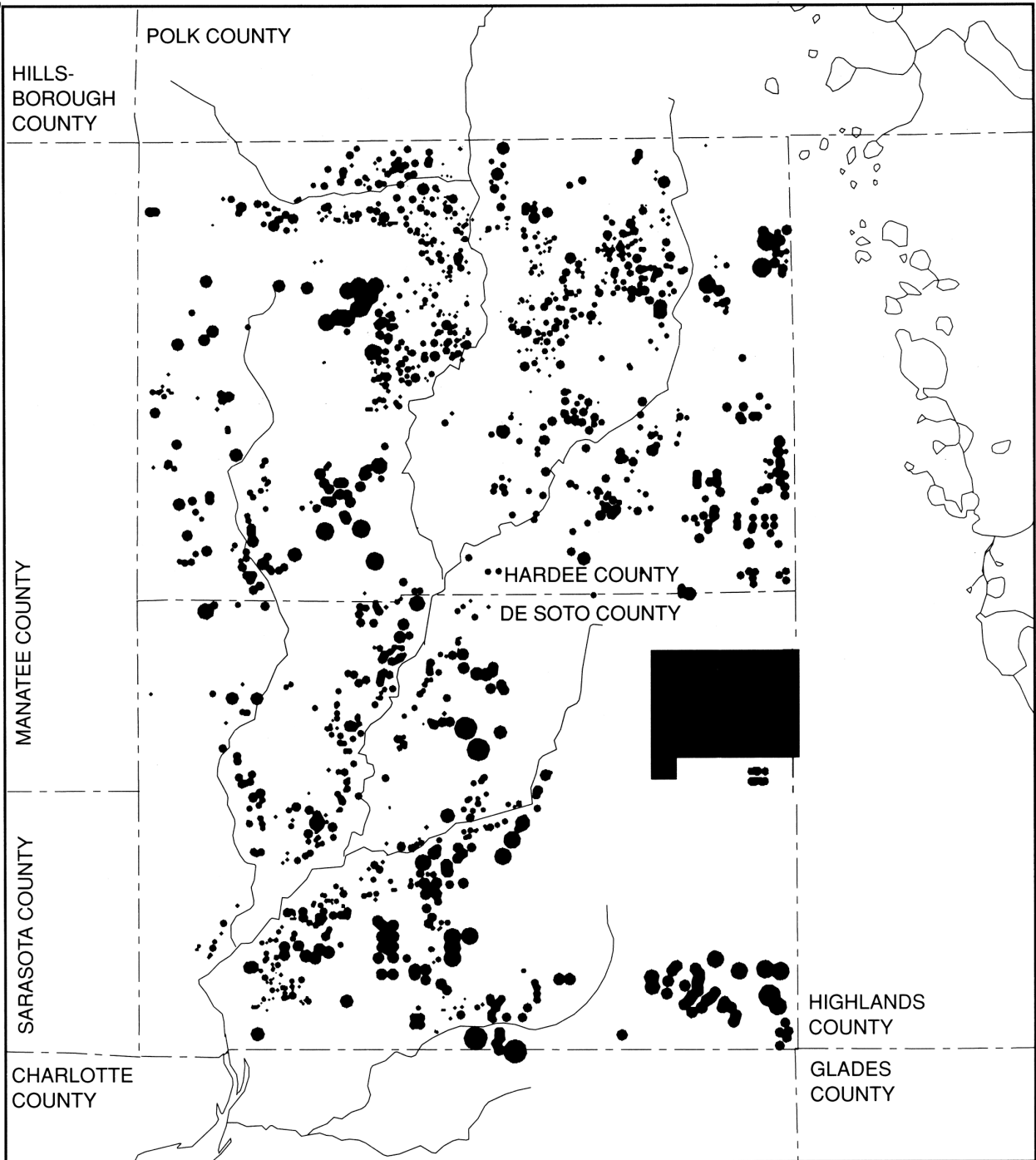
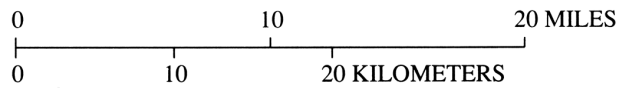


82° 09' 15"
27° 43' 57"

81° 22'



26° 56' 30"



EXPLANATION



AREA OF CITRUS GROVES

Generalized Location of Citrus Groves in Hardee and De Soto Counties, 1988

P. A. Metz, *USGS Water Resources Investigations Report 93-4158* (Tallahassee, FL: U. S. Geological Survey, 1995)

Downloaded from *Maps ETC*, on the web at <http://etc.usf.edu/maps> [map #f8907]