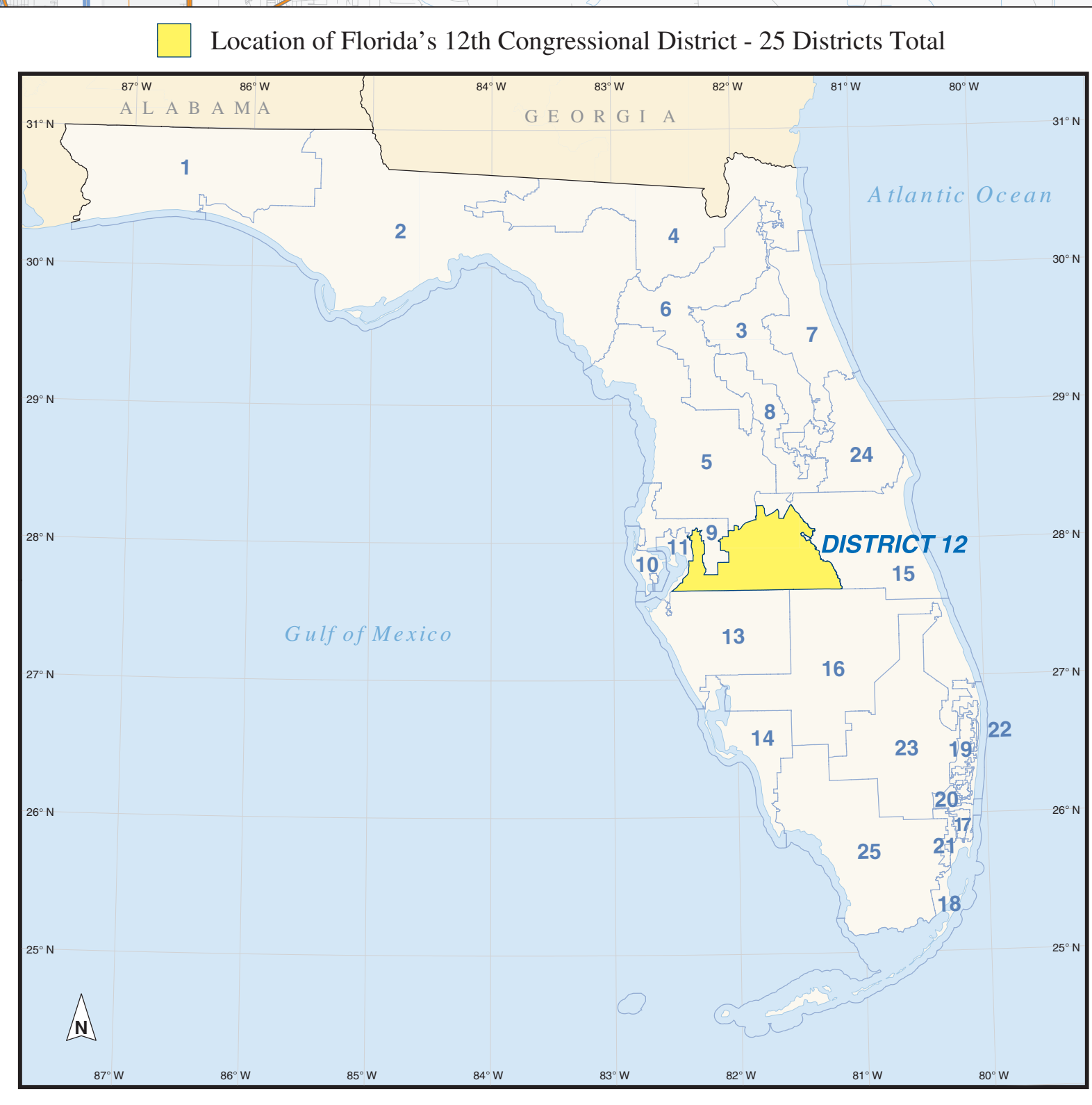
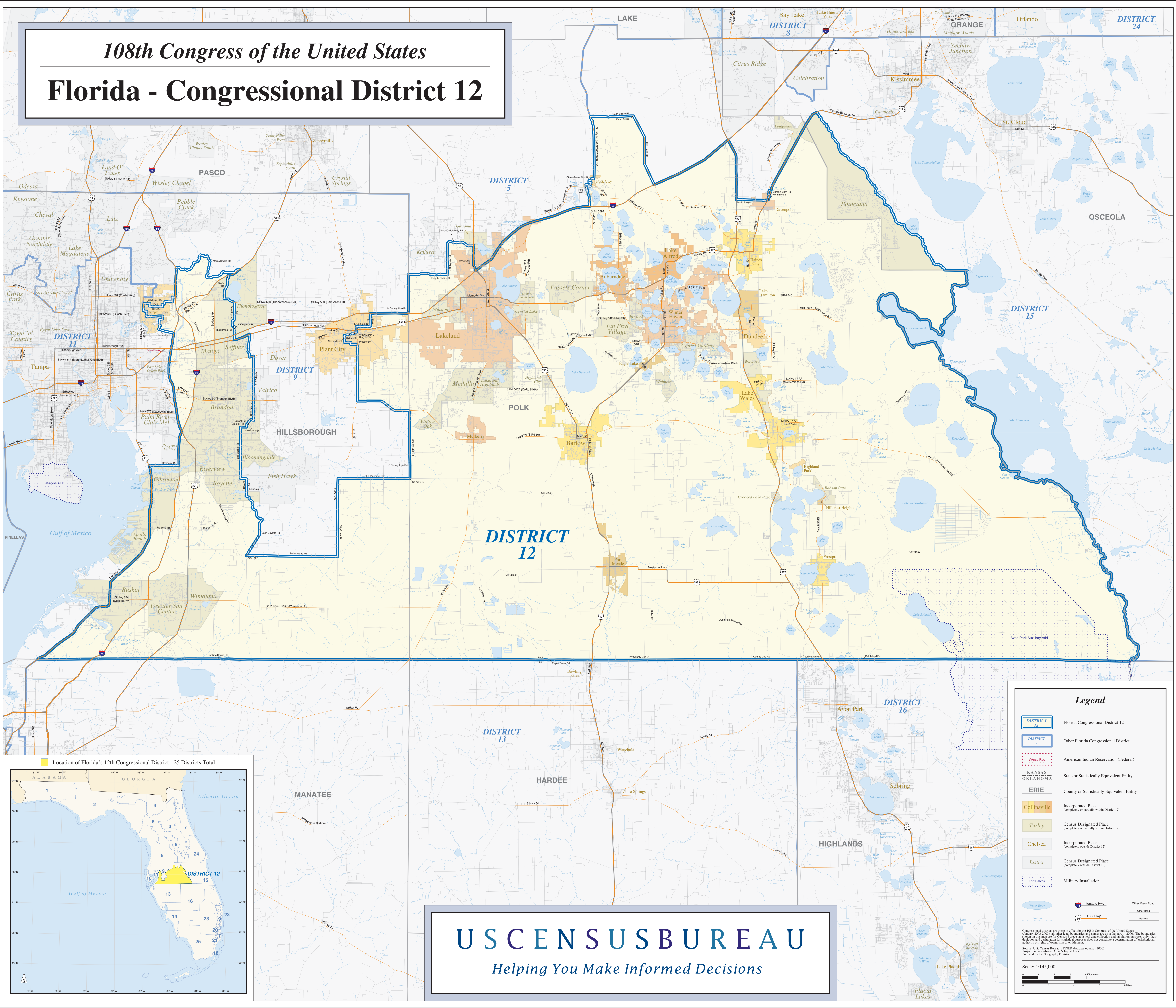


108th Congress of the United States

Florida - Congressional District 12



Legend

- DISTRICT 12 Florida Congressional District 12
- DISTRICT Other Florida Congressional District
- American Indian Reservation (Federal)
- KANSAS, OKLAHOMA State or Statistically Equivalent Entity
- ERIE County or Statistically Equivalent Entity
- Collinsville Incorporated Place (completely or partially within District 12)
- Turley Census Designated Place (completely or partially within District 12)
- Chelsea Incorporated Place (completely outside District 12)
- Justice Census Designated Place (completely outside District 12)
- Fort Babcock Military Installation
- Interstate Hwy
- U.S. Hwy
- Water Body
- Other Major Road
- Other Road
- Railroad

Congressional districts are those in effect for the 108th Congress of the United States (January 3, 2005 - January 3, 2007). The boundaries shown on this map are for Census Bureau statistical data collection and tabulation purposes only; they do not constitute a determination of jurisdictional authority or rights of ownership or entitlement.

Source: U.S. Census Bureau, 2000 Census of Population and Housing, Census 2000. Prepared by the Geography Division.

Scale: 1:145,000

USCENSUSBUREAU

Helping You Make Informed Decisions