

### ESTIMATED WATER USE IN FLORIDA, 1965

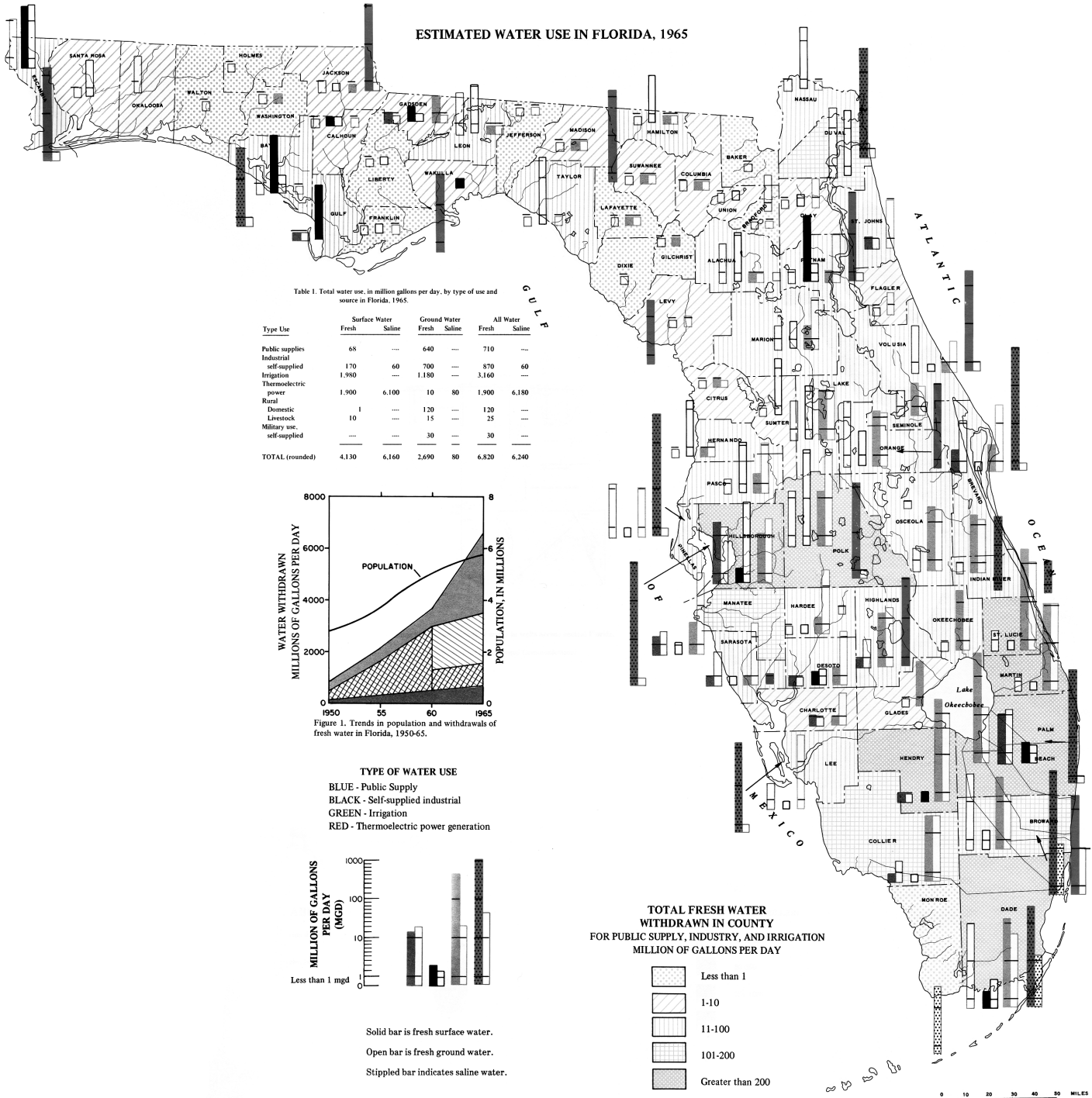


Table 1. Total water use, in million gallons per day, by type of use and source in Florida, 1965.

Type Use	Surface Water		Ground Water		All Water	
	Fresh	Saline	Fresh	Saline	Fresh	Saline
Public supplies	68	---	640	---	710	---
Industrial self-supplied	170	60	700	---	870	60
Irrigation	1,980	---	1,180	---	3,160	---
Thermoelectric power	1,900	6,100	10	80	1,900	6,180
Rural Domestic	1	---	120	---	120	---
Livestock	10	---	15	---	25	---
Military use, self-supplied	---	---	30	---	30	---
<b>TOTAL (rounded)</b>	<b>4,130</b>	<b>6,160</b>	<b>2,690</b>	<b>80</b>	<b>6,820</b>	<b>6,240</b>

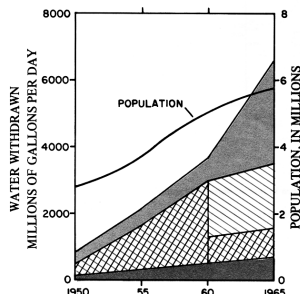
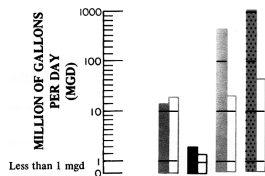


Figure 1. Trends in population and withdrawals of fresh water in Florida, 1950-65.

**TYPE OF WATER USE**  
 BLUE - Public Supply  
 BLACK - Self-supplied industrial  
 GREEN - Irrigation  
 RED - Thermoelectric power generation



Solid bar is fresh surface water.  
 Open bar is fresh groundwater.  
 Stippled bar indicates saline water.

**TOTAL FRESH WATER WITHDRAWN IN COUNTY FOR PUBLIC SUPPLY, INDUSTRY, AND IRRIGATION MILLION OF GALLONS PER DAY**

- Less than 1
- 1-10
- 11-100
- 101-200
- Greater than 200

0 10 20 30 40 50 MILES

### Estimated Water Use in Florida, 1975